



SOLID-STATE TWO-WIRE TIME RELAY SETTING RANGE 5 S...100 S, AC/DC 90...240 V, ON-DELAY, WITH VARISTOR, FOR MOUNTING ONTO CONTACTORS SIZE S0...S3

General technical data:		
product brand name		SIRIUS
Product designation		timing relay
Type of voltage		AC
Size of contactor can be combined company-specific		S0 ... S3
Product function		
• star-delta circuit		No
• at the relay outputs Switchover delayed/without delay		No
Product component semi-conductor output		Yes
Product expansion		
• optional remote control		No
• required remote control		No
Adjustable time	s	5 ... 100
Ambient temperature during operation	°C	-25 ... +60
Equipment marking acc. to DIN 40719 extended according to IEC 204-2 acc. to IEC 750		K
Equipment marking acc. to DIN EN 61346-2		K

Switching Function:		
Switching function		
• ON-delay		Yes
• passing make contact		No
• fixed clock cycle beginning with pulse		No
• fixed clock cycle beginning with interval		No
• OFF delay		No

- variably clocked start with impulse
- variably clocked start with interval
- with control signal
 - additive ON delay
 - passing break contact
 - OFF delay

No
No
No
No
No

Auxiliary circuit:

Number of NC contacts

- delayed switching
- instantaneous contact

0
0

Number of NO contacts

- delayed switching
- instantaneous contact

1
0

Number of CO contacts

- delayed switching
- instantaneous contact

0
0

Installation/ mounting/ dimensions:

Width

mm 45

Height

mm 26

Depth

mm 50

Connections/ Terminals:

Type of electrical connection

- for auxiliary and control current circuit

screw-type terminals

Certificates/ approvals:

General Product Approval	EMC	Functional Safety/Safety of Machinery
--------------------------	-----	---------------------------------------



CCC



CSA



UL



C-TICK

[Type Examination](#)

Declaration of Conformity	Test Certificates	Shipping Approval
---------------------------	-------------------	-------------------



EG-Konf.

[Special Test Certificate](#)



ABS



BUREAU VERITAS



DNV



GL

Shipping Approval	other
-------------------	-------



LRS



PRS



RINA



RMRS

[Environmental Confirmations](#)

[Confirmation](#)

other

[other](#)

Further information

Information- and Downloadcenter (Catalogs, Brochures,...)

<http://www.siemens.com/industrial-controls/catalogs>

Industry Mall (Online ordering system)

<http://www.siemens.com/industrymall>

Cax online generator

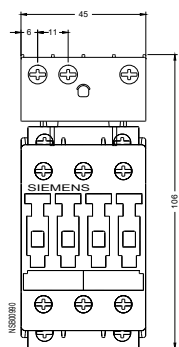
<http://support.automation.siemens.com/WW/CAXorder/default.aspx?lang=en&mlfb=3RT19262CH31>

Service&Support (Manuals, Certificates, Characteristics, FAQs,...)

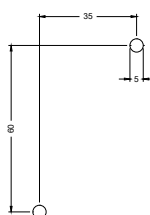
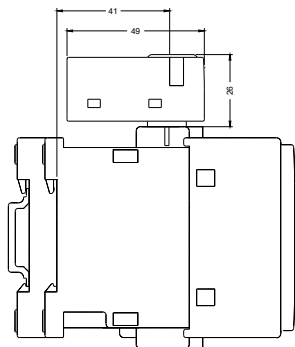
<https://support.industry.siemens.com/cs/ww/en/ps/3RT19262CH31>

Image database (product images, 2D dimension drawings, 3D models, device circuit diagrams, EPLAN macros, ...)

http://www.automation.siemens.com/bilddb/cax_de.aspx?mlfb=3RT19262CH31&lang=en



last modified:



05.05.2015