



**Bridgeport Fittings Inc.**

705 Lordship Blvd.

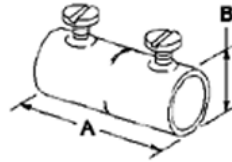
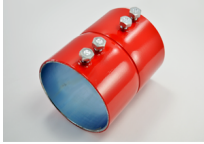
Stratford, CT 06615

Phone: 203-377-5944

Fax: 203-381-3488

## Couplings - Steel - Color-Coded (ALL COLORS)

### Images



[Download Photo Image](#)

[Download Dimensional Image](#)

### Application

Set screw coupling used to join two lengths of EMT. Color coded red to match EMT for easy identification. Use with red EMT for emergency circuits, fire alarm and security system applications. Concrete-tight. Furnished with Tri-Drive slot/Phillips/Robertson head screws.

### Product Information

Material: Steel

Finish: Red Powder Coat

### Certifications & Codes:

Federal Specification Number: A-A-50553

NEMA Standard: FB-1

UL File Number: E24001

UL Standard: UL514B

UNSPSC: 39131707

Patent Number: 6,861,585

**Catalog ID:** 247-SR

**UPC Number:** 78174702247

**Description:** 3" Fire Alarm EMT Coupling, Red Steel

**Application:** Set screw coupling used to join two lengths of EMT. Color coded red to match EMT for easy identification. Use with red EMT for emergency circuits, fire alarm and security system applications. Concrete-tight. Furnished with Tri-Drive slot/Phillips/Robertson head screws.

**Trade Size:** 3"

**Std Pkg Qty:** 10

**Unit Qty:** 2