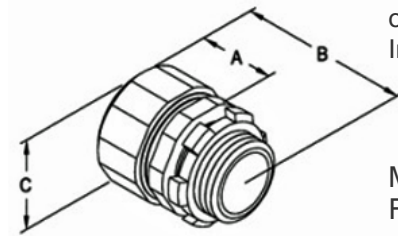
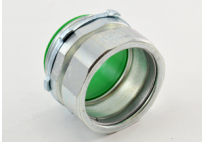


Connectors - US Steel

Images



Application

Compression type connectors used to join EMT to box or enclosure. Concrete Tight. Made in the USA!
Insulated Throat -105°C

Product Information

Material: Steel
Finish: Zinc Electro-Plate

Certifications & Codes:

Federal Specification Number:	A-A-50553
NEMA Standard:	FB-1
UL File Number:	E24001
UL Standard:	UL-514B
UNSPSC:	39121434

[Download Photo Image](#)[Download Dimensional Image](#)

Dimension A in Inches: 3.000
Dimension B in Inches: 2.438
Dimension C in Inches: 0.500

Catalog ID: 254-USI

UPC Number: 78174722254

Description: Connector, compression, steel. 105°C insulated throat, size 1-1/2"

Application: Compression type connectors used to join EMT to box or enclosure. Concrete Tight. Made in the USA!
Insulated Throat -105°C

Trade Size: 1 1/2"

Country of Manufacture: USA

Std Pkg Qty: 25

Unit Qty: Bulk