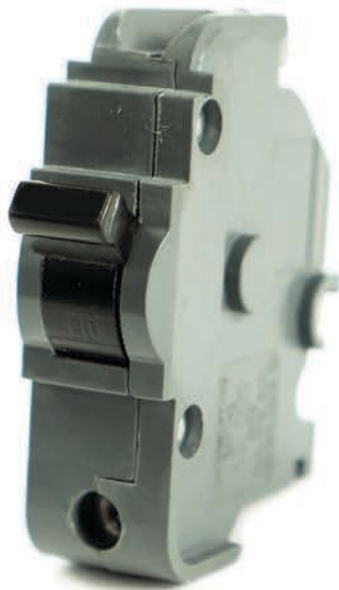
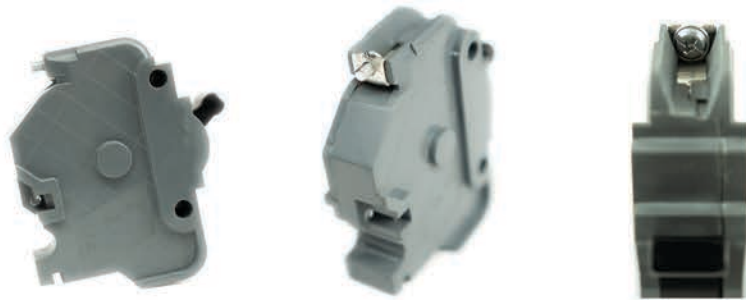


HIGH-QUALITY MANUFACTURED REPLACEMENTS FOR FEDERAL PACIFIC ELECTRIC COMMERCIAL CIRCUIT BREAKERS



Connecticut Electric brings **leading performance** and **quality** to replacement circuit breakers.



Connecticut Electric Replacement Bulk Circuit Breakers Specifications

COMPATIBILITY LIST FOR CLASSIFIED APPLICATIONS — CONNECTICUT ELECTRIC — PUBLICATION NO. 110

Type UBIF-NB 120/240 VAC 10KA MAX

Do not use in series rated systems with those panel boards shown in this compatibility list.

Compatible with Federal Pacific Electric type NBLP panel boards.

Item	X-Ref	Amp/size	Description	UPC Code	INNER PACK	MASTER PACK
UBIF15NB	NB15	1P / 15A	UBIF15NB THICK 1P 15A BOLT-ON	0-94925-00415-1	100-94925-00415-8	300-94925-00415-2
UBIF20NB	NB20	1P / 20A	UBIF20NB THICK 1P 20A BOLT-ON	0-94925-00416-8	100-94925-00416-5	300-94925-00416-9
UBIF30NB	NB30	1P / 30A	UBIF30NB THICK 1P 30A BOLT-ON	0-94925-00417-5	100-94925-00417-2	300-94925-00417-6
UBIF220NB	NB220	2P / 20A	UBIF220NB THICK 2P 20A BOLT-ON	0-94925-00418-2	100-94925-00418-9	300-94925-00418-3
UBIF230NB	NB230	2P / 30A	UBIF230NB THICK 2P 30A BOLT-ON	0-94925-00419-9	100-94925-00419-6	300-94925-00419-0
UBIF240NB	NB240	2P / 40A	UBIF240NB THICK 2P 40A BOLT-ON	0-94925-00420-5	100-94925-00420-2	300-94925-00420-6
UBIF250NB	NB250	2P / 50A	UBIF250NB THICK 2P 50A BOLT-ON	0-94925-00421-2	100-94925-00421-9	300-94925-00421-3
UBIF260NB	NB260	2P / 60A	UBIF260NB THICK 2P 60A BOLT-ON	0-94925-00422-9	100-94925-00422-6	300-94925-00422-0

Our NB series of replacement breakers are Listed to UL489 and meet the requirements of today's UL standard for circuit breaker safety.