

60802**6-8 X 3/4 LEAD SCREW ANCHORS**

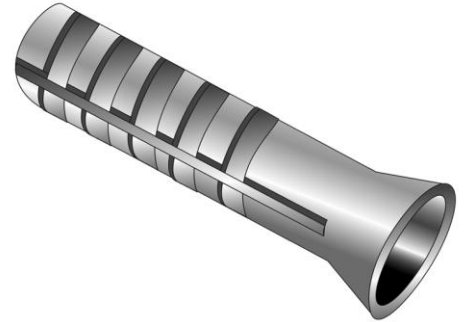
UPC: 085937608024

Country of Origin:

UNSPSC: 31162104

China

Commodity: Screw anchors



A hollow, cylindrical anchor which is split from the bottom up, and has longitudinal ribs for part of its length. The diameter at the split end is tapered; the top end is flared to a wider diameter than the rest of the body.

Product Attributes

Brand Name	Minerallac Company
Sub Brand	Cully
Type	Lead Screw Anchor
Application	Used with wood screws, lags, and tapping screws for light duty applications in brick, block, drywall, masonry, or concrete. Will conform to irregular, out-of-round holes.
Diameter	#6-8
Length	3/4" IN
Minimum Embedment Depth	3/4" IN
Drill Size	1/4" IN
Screw Size	1/8" – 3/16" IN
Material	Lead Alloy

Item Status: Active

Standard Qty: 100

Minerallac Company

Tel: 800-927-3293

Fax: 800-824-8942

www.minerallac.com