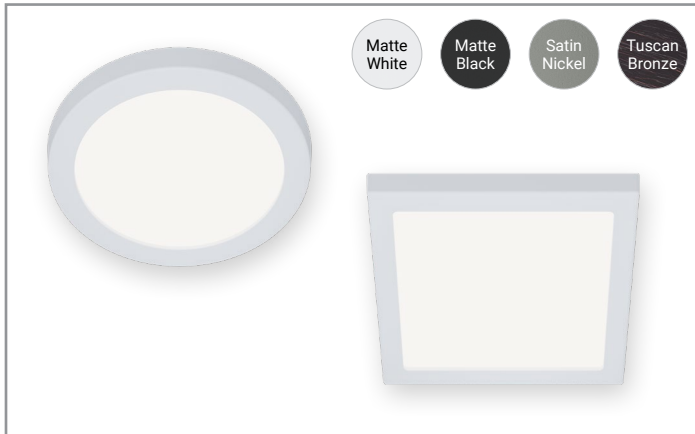


Project		Catalog #		Type	
Prepared by		Notes		Date	



HALO

SMD4 Surface Mount LED Downlight

The HALO SMD Surface Mount Downlight combines modern style with high performance, suitable for new construction, remodel, and retrofit projects. Its sleek design remains unchanged, but the installation process is now easier thanks to a new twist and lock mounting bracket. This bracket ensures a secure, gap-free fit, providing a flawless finish. The SMD series can be installed directly to a junction box or recessed housings, making it versatile for any lighting project. Enjoy the perfect blend of style and functionality with a hassle-free installation.

Typical Applications Residential

Interactive Menu

- Order Information page 2
- Product Specifications page 3
- Photometric Data page 4
- Product Warranty



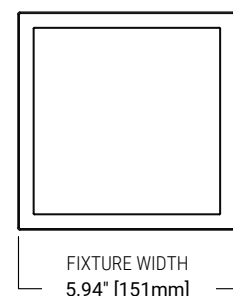
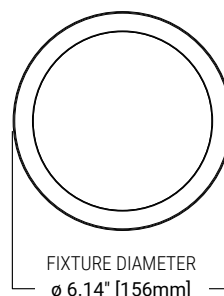
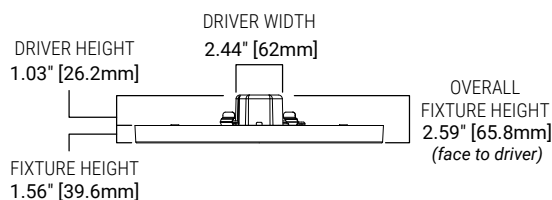
Refer to ENERGY STAR® Certified Products List.
Can be used to comply with California Title 24 High Efficacy requirements.¹
Certified to California Appliance Efficiency Database under JAB.



Top Product Features

- 4" Surface Mount Downlight
- Redesigned Mounting Bracket for faster installation
- Installs in many 3-1/2" and 4" (30/40) square, octagonal, or round junction boxes
- 5-color Field-SeleCCTable (27/30/35/40/5000K); 90+ CRI
- **Brightness (@3000K):** 780 lm (Round & Square)
- **Dimming:** Dims to 5% (phase cut LE/TE) with compatible dimmers; 120V input
- Mounting hardware, orange LED Quick Connect and E26 adapter included
- Decorative Overlays (sold separately)
- AIR-TITE, wet location-listed, IC-rated, and ENERGY STAR® certified
- 50,000 hrs of maintenance-free operation
- 5-year warranty

Dimensional and Mounting Details



Order Information

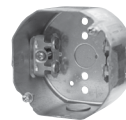
Catalog Number	Description	Lumens (@3000K)	CCT	Finish	Driver Compatibility	Packaging
SMD4R07FS5	4" Round Surface Mount LED Downlight	780 lm	90+ CRI, Field Selectable CCT: 2700/3000/3500/4000/5000K	Matte White	120V 60Hz, LE & TE phase cut 100-5% dimming	Plastic-free recyclable
SMD4S07FS5	4" Square Surface Mount LED Downlight	780 lm	90+ CRI, Field Selectable CCT: 2700/3000/3500/4000/5000K	Matte White	120V 60Hz, LE & TE phase cut 100-5% dimming	Plastic-free recyclable

Multi-packs

Catalog Number	Description	Lumens (@3000K)	CCT	Finish	Driver Compatibility	Packaging
SMD4R07FS5-6PK	4" Round Surface Mount LED Downlight 6 Pack	780 lm	90+ CRI, Field Selectable CCT: 2700/3000/3500/4000/5000K	Matte White	120V 60Hz, LE & TE phase cut 100-5% dimming	6 Pack Plastic-free recyclable
SMD4S07FS5-6PK	4" Square Surface Mount LED Downlight 6 Pack	780 lm	90+ CRI, Field Selectable CCT: 2700/3000/3500/4000/5000K	Matte White	120V 60Hz, LE & TE phase cut 100-5% dimming	6 Pack Plastic-free recyclable

Accessories		
Catalog Number	Description	Finish
SMD4RTRMWH	4" Round Decorative Overlay	Paintable Matte White
SMD4RTRMMB	4" Round Decorative Overlay	Matte Black
SMD4RTRMSN	4" Round Decorative Overlay	Satin Nickel
SMD4RTRMTBZ	4" Round Decorative Overlay	Tuscan Bronze
SMD4STRMWH	4" Square Decorative Overlay	Paintable Matte White
SMD4STRMMB	4" Square Decorative Overlay	Matte Black
SMD4STRMSN	4" Square Decorative Overlay	Satin Nickel
SMD4STRMTBZ	4" Square Decorative Overlay	Tuscan Bronze

Decorative Overlays

SMD4RTRMWH
Paintable Matte WhiteSMD4RTRMMB
Matte BlackSMD4RTRMSN
Satin NickelSMD4RTRMTBZ
Tuscan BronzeSMD4STRMWH
Paintable Matte WhiteSMD4STRMMB
Matte BlackSMD4STRMSN
Satin NickelSMD4STRMTBZ
Tuscan BronzeCompatible Junction Boxes ²Octagon
Steel Light Fixture w/Fan Box
4" x 4" x 2-1/8"Square
Steel Deep Box
4" x 4" x 2-1/8"**Note:** for square version of SMD onlyRound
New Work Fixture Box (Plastic)
4" Diameter x 2-3/16"Round
New Work Ceiling Box (Plastic)
3-1/2" Diameter x 2-3/4"Round
Old Work Box (Plastic)
4-1/4" Diameter flange (3-1/2" I.D.) x 2-5/8"Round
New Work Fixture Box (Plastic) w/Bar Hanger
4" x 2-3/16"TP316
For non-metallic cable
4" x 4" x 2-1/8"TP317
For metal clad cable
4" x 4" x 2-1/8"Cat #: JB4FR2
4" NC JBox for Fire Rated Ceilings
4" diameter x 5-1/2"
(102mm x 140mm)

² This is a representative list of compatible junction boxes only. Information contained in this literature about other manufacturers' products is from published information made available by the manufacturer and is deemed to be reliable, but has not been verified. Cooper Lighting Solutions makes no specific recommendation on product selection and there are no warranties of performance or compatibility implied. Installer must determine that site conditions are suitable to allow proper installation of the mounting bracket in the box.

Compatible Housings

HALO - 4" Housings³

Standard Housing	H99ICAT, H99RTAT, H99TAT, E4ICATSB, E4TATSB, E4RTATSB
LED Housing	H995ICAT, H995RICAT, H245ICAT, H245RICAT
Shallow Housing	H245ICAT, H245RICAT

3. The SMD4 is UL Certified for use with any 4" diameter recessed housing constructed of steel or aluminum with an internal volume that exceeds 62.3 in³ addition to those noted above.

Product Specifications

Module

- Non-electrically conductive polycarbonate frame.
- Stamped aluminum heat sink provides passive thermal cooling achieving L70 at 50,000 hrs in IC (insulation contact) and non-IC applications

Selectable System

- Use the CCT select switch to choose between 5 color temperatures.
- Color Temperature: Selectable color temperature (2700K, 3000K, 3500K, 4000K, 5000K)
- Factory default is set to 3000K

LED Array

- Color Quality: 90+ CRI minimum, R9 greater than 50
- Color Accuracy within 4 SDCM at the CCT endpoints provides excellent color quality and uniformity
- Factory default color temperature (CCT) is set to bright white (3000K)
- Mid power led array provide a uniform source with high efficiency and long life
- Expected Life: L70 at 50,000 hours projected in accordance with TM-21

Optical Assembly

- Precision engineered optic provides uniform luminance from a low-profile convex lens

Driver & Dimming

- Integral 120V 60Hz constant current driver provides noise-free, high-efficiency operation
- **Dimmable:** Continuous, flicker-free phase cut (leading-edge/trailing-edge - LE/TE) dimming from 100% to 5% output with compatible dimmers
- See this fixture's Dimming Guide for compatible dimmers
 - **Tip:** For optimal dimming performance, consider dimmers with low-end trim adjustment; note that some dimmers require a neutral wire in the box
- **Wiring:** Includes electrical orange LED Quick Connect and E26 medium socket adapter provides mains connections for recessed housing installations. (Reference installation instructions for complete mounting steps.)

Electrical Junction Box Mounting

- Installs from below the ceiling in most 30 (3-1/2") and 40 (4") standard square/round/octagonal junction boxes
- May be used in compatible electrical junction boxes in direct contact with insulation, including spray foam insulation
- Installer must ensure compatibility of fit, wiring, and proper mounting in the electrical junction box. This includes all applicable national and local electrical and building coded NEMA LSD 57-2013
- Reference installation instructions for complete mounting steps

Recessed Housing Mounting

- Installs from below the ceiling to HALO 4" recessed housings with included extension springs (non-California product only)
- Not for use in recessed housings in direct contact with spray foam insulation refer to NEMA LSD 57-2013
- The included wire nuts, LED connector, and E26 medium socket adapter provide easy mounting to recessed housings (non-California product only)
- Reference installation instructions for complete mounting steps

Compliance

- cULus certified for US and Canada
- Wet location listed
- Airtight per ASTM-E283 (no gasket necessary)
- Suitable for use in clothes closets when installed in accordance with the NEC 410.16 spacing requirements
- EMI/RFI emissions per FCC 47CFR Part 15 consumer limits
- Contains no mercury or lead and RoHS compliant¹
- Photometric testing in accordance with IES LM-79-08
- Lumen maintenance projections in accordance with IES LM-80-08 and TM-21-11
- ENERGY STAR® certified, reference Certified Light Fixtures database

- Certified to State of California Title 20, State regulated LED Lamp; reference Modernized Appliance Efficiency Database System (MAEDBS) for State-regulated LED Lamp
- Can be used for State of California Title 24 high efficacy LED compliance under JA8¹, reference Modernized Appliance Efficiency Database System (MAEDBS) for 2022 JA8 High Efficacy Lighting

Warranty

- Five year limited warranty, consult website for details. www.cooperlighting.com/warranty

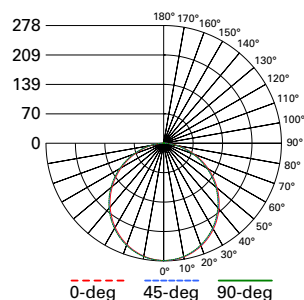
Energy Data

	120V (Triac)	
	Round	Square
	SMD4R07FS5	SMD4S07FS5
Lumens	715	715
Input Voltage (V)	120V	120V
Input Current (A)	74mA	74mA
Input Power (W)	7.9W	7.9W
Efficiency	80%	80%
Inrush (A)	2.08A @ 16usec	2.08A @ 16usec
THDi (%)	<20	<20
PF	>0.9	>0.9
T Ambient	-30 to +40 °C	-30 to +40 °C
Sound Rating	<22db @1feet	<22db @1feet
Efficacy(LPW)	>90	>90

SMD4R07FS5 (Equivalent to 60W Incandescent)				
CCT	Watts	Lumens	LPW	CRI
2700K	7.9	770	97.5	93
3000K	7.95	780	98.1	93
3500K	8.0	790	98.8	93
4000K	8.0	780	97.5	93
5000K	7.9	760	96.2	93

SMD4S07FS5 (Equivalent to 60W Incandescent)				
CCT	Watts	Lumens	LPW	CRI
2700K	8.0	745	93.1	93
3000K	8.05	780	96.3	93
3500K	8.2	780	95.1	93
4000K	8.2	790	96.3	93
5000K	8.1	790	97.5	93

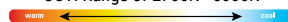
Photometric Data

**SMD4R07FS5-3000K**

Spacing criterion:
(0-180) 1.26 | (90-270) 1.24
(Diagonal) 1.38
Beam Angle: 111°
Field Angle: 162°
Lumens: 780
Input Watts: 8 W
Efficacy: 97 LPW
UGR: 30.6
Test Report: P991369

Zonal Lumen	Lumens	% Lumens
0-30	214.4	27
0-40	350.2	45
0-60	615.9	79
0-90	779.4	100

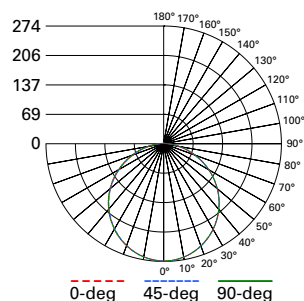
CCT: Range of 2700K - 5000K



TM-30-15	Rf = 93
	Rg = 101
CRI/CIE	Ra = 96
	R9 = 91



111°

**SMD4S07FS5-3000K**

Spacing criterion:
(0-180) 1.26 | (90-270) 1.26
(Diagonal) 1.38
Beam Angle: 113°
Field Angle: 164°
Lumens: 780
Input Watts: 8.1 W
Efficacy: 96.3 LPW
UGR: 30.5
Test Report: P991374

Zonal Lumen	Lumens	% Lumens
0-30	211.8	27
0-40	346.5	44
0-60	612.6	79
0-90	799.7	103

CCT: Range of 2700K - 5000K



TM-30-15	Rf = 91
	Rg = 99
CRI/CIE	Ra = 95
	R9 = 72



113°