



MILBANK[®]
ENERGY AT WORK

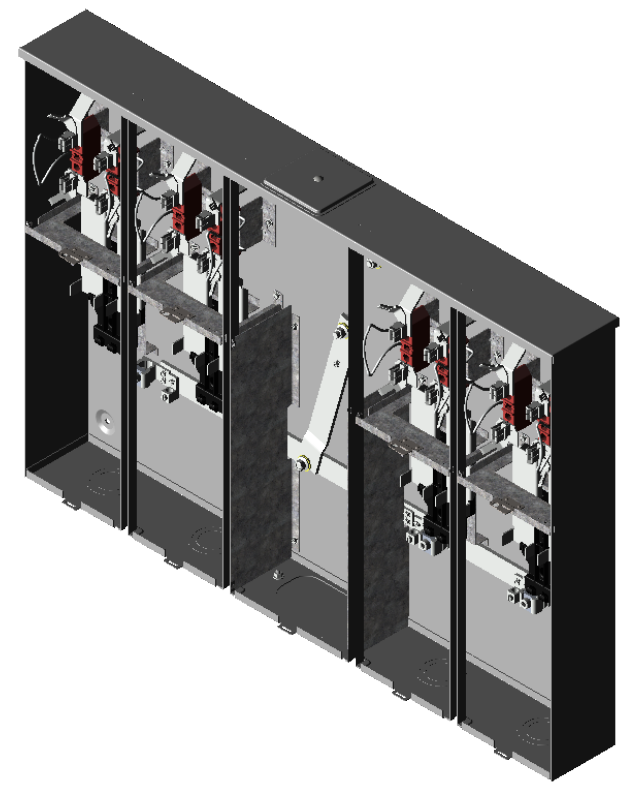
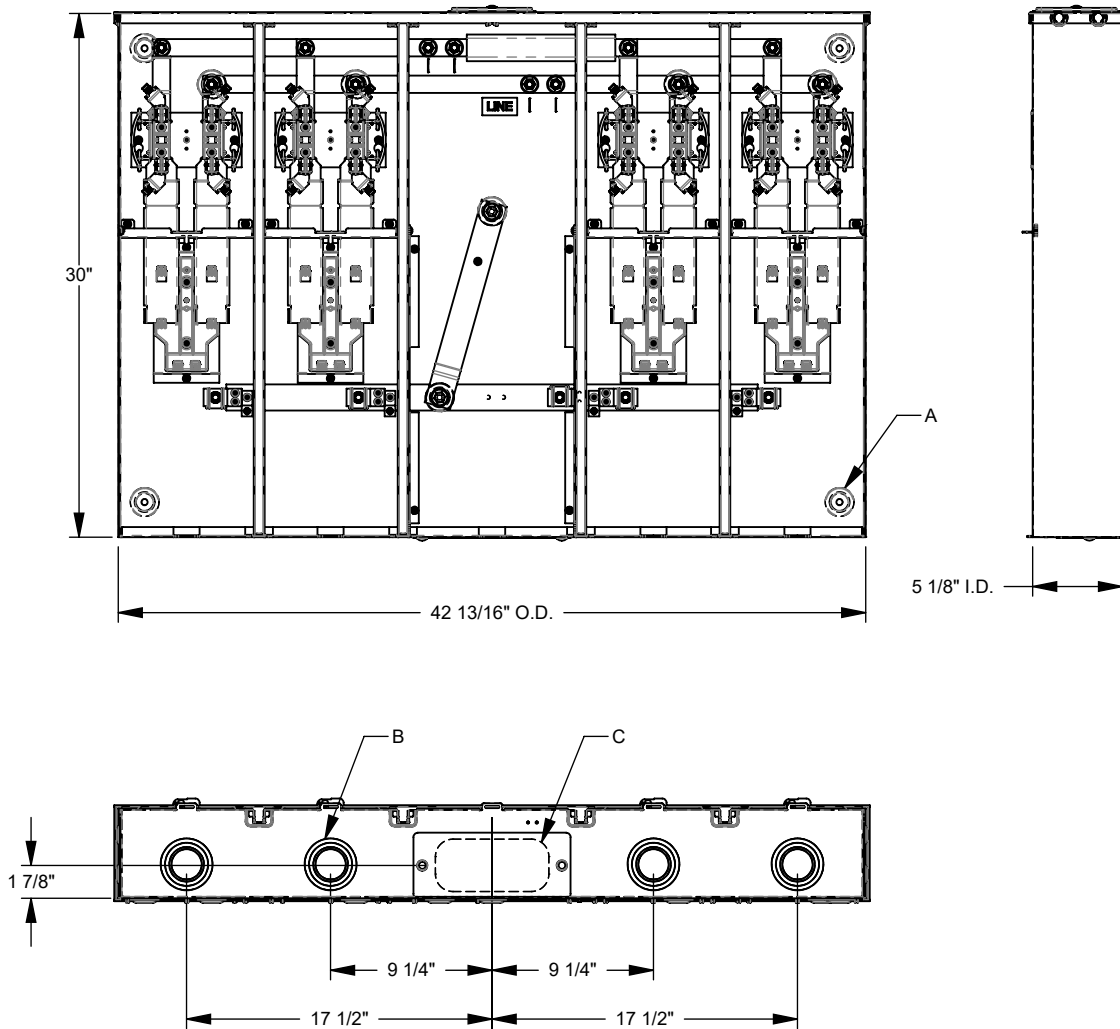
U5884-X-KK-PED-CECHA



Catalog Number	U5884-X-KK-PED-CECHA	Cable Entry	Overhead or Underground
Marketing Product Description	4 Terminal Ringless Large Closing Plate Horn Bypass 4 Position 4-200 Ampere Main Breaker Provision Pedestal Mount Provision Horizontal Commonwealth Edison Chicago Housing Authority	Terminal	3/8 Inch Stud
UPC	784572674059	Insulation	Glass Polyester
Length (IN)	5.125	Mounting	Surface Mount
Width (IN)	42.813	Enclosure	G90 Galvanized Steel with Powder Coat Finish
Height (IN)	30	Jaw Quantity	4 Terminal
Brand Name	Milbank	Bypass Type	Horn Bypass
Type	Ringless Meter Socket	Number of Meter Positions	4 Positions
Special Features	Commonwealth Edison Chicago Housing Authority	Equipment Ground	Ground Lug
Application	Meter Socket With Main	Hub Opening	Large Closing Plate
Standard	UL Listed;Type 3R	Load Side Wire Range	1 AWG - 300 kcmil
Voltage Rating	Up to 240 Volts Alternating Current	Number Of Receptacles	0
Amperage Rating	200 Continuous Ampere		
Phase	1 Phase		
Frequency Rating	60 Hertz		
Size	5.125L x 42.813W x30H		
Number Of Cutouts	4		
Cutout Size	Breaker Provision		

Please consult serving utility for their requirements prior to ordering or installing, as specifications and approvals vary by utility and may require local electrical inspector approval. All installations must be installed by a licensed electrician and must comply with all national and local codes, laws and regulations. Milbank reserves the right to make changes in specifications and features shown without notice or obligation.

FEATURE TABLE		
ITEM	QTY	DESCRIPTION
A	4	TRANS. MNTG.EMBOSS
B	6	1, 1¼, 1½, 2, 2½ CONC. K.O.
C	1	WESTERN LIGHT OPENING



Version:

1

**All dimensions are +/- 1/16".
Drawing views are not to scale.**

Please consult serving utility for their requirements prior to ordering or installing, as specifications and approvals vary by utility, and may require local electrical inspector approval. All installations must be installed by a licensed electrician and must comply with all national and local codes, laws and regulations. Milbank reserves the right to make changes in specifications and features shown without notice or obligation.