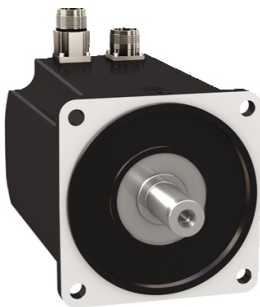


# Product data sheet

Specifications



servo motor BMH, Lexium 32,  
18.5Nm, 4000rpm, untapped shaft,  
with brake, IP54, 16 multiturn  
encoder, straight

BMH1402P07F1A

! Discontinued

! Discontinued on: Oct 9, 2023

Product availability: Non-Stock - Not normally stocked in  
distribution facility

## Main

Device short name	BMH
Product or Component Type	Servo motor
Maximum mechanical speed	4000 rpm
Continuous stall torque	163.7 lbf.in (18.5 N.m) LXM32.D72N4 24 A, 400 V, three phase 163.7 lbf.in (18.5 N.m) LXM32.D72N4 24 A, 480 V, three phase
Peak stall torque	445.2 lbf.in (50.3 N.m) LXM32.D72N4 24 A, 400 V, three phase 445.2 lbf.in (50.3 N.m) LXM32.D72N4 24 A, 480 V, three phase
Nominal output power	3500 W LXM32.D72N4 24 A, 400 V, three phase 3500 W LXM32.D72N4 24 A, 480 V, three phase
Nominal torque	108.0 lbf.in (12.2 N.m) LXM32.D72N4 24 A, 400 V, three phase 108.0 lbf.in (12.2 N.m) LXM32.D72N4 24 A, 480 V, three phase
Nominal speed	3000 rpm LXM32.D72N4 24 A, 400 V, three phase 3000 rpm LXM32.D72N4 24 A, 480 V, three phase
Product compatibility	LXM32.D72N4 400...480 V three phase
Shaft end	Smooth shaft
IP Degree of Protection	IP54 standard
Speed feedback resolution	32768 points/turn x 4096 turns
Holding brake	With
Mounting Support	International standard flange
Electrical Connection	Straight connectors

## Complementary

Range Compatibility	Lexium 32
[Us] rated supply voltage	480 V
Phase	Three phase
Continuous stall current	16.83 A
Continuous power	4.44 W
Maximum current Irms	57.4 A LXM32.D72N4
Maximum permanent current	57.4 A
Second shaft	Without second shaft end
Shaft diameter	0.9 in (24 mm)

Price is "List Price" and may be subject to a trade discount – check with your local distributor or retailer for actual price.

Disclaimer: This documentation is not intended as a substitute for and is not to be used for determining suitability or reliability of these products for specific user applications

Shaft length	2.0 in (50 mm)
Feedback type	Multiturn SinCos Hiperface
Holding torque	159.3 lbf.in (18 N.m) holding brake
Motor flange size	5.5 in (140 mm)
Number of motor stacks	2
Torque constant	1.1 N.m/A 248 °F (120 °C)
Back emf constant	70.7 V/krpm 248 °F (120 °C)
Number of motor poles	10
Rotor inertia	33.5 kg.cm²
Stator resistance	0.23 Ohm 68 °F (20 °C)
Stator inductance	3 mH 68 °F (20 °C)
Stator electrical time constant	13 ms 68 °F (20 °C)
Maximum radial force Fr	2240 N 1000 rpm 1780 N 2000 rpm 1550 N 3000 rpm
Maximum axial force Fa	0.2 x Fr
Brake pull-in power	18 W
type of cooling	Natural convection
Length	8.9 in (227 mm)
Centring collar diameter	5.1 in (130 mm)
centring collar depth	0.1 in (3.5 mm)
Number of mounting holes	4
Mounting holes diameter	0.4 in (11 mm)
Circle diameter of the mounting holes	6.5 in (165 mm)
Product Weight	31.5 lb(US) (14.3 kg)
Sizing reference	BMH1402P
Network number of phases	3
Accuracy error [angular]	4.8 °
Coefficient 1_1	-0.0015580971044942 N.m/rpm
Coefficient 1_2	-0.00000000740962495854577 N.m/rpm²
Coefficient 1_3	0.00000000000968956725377379 N.m/rpm³
Coefficient 1_4	-0.0000000000000052956438523721 N.m/rpm⁴
Coefficient 1_5	0.00000000000000000122533438374952 N.m/rpm⁵
Coefficient 1_6	-0.000000000000000000010211119865247 N.m/rpm⁶
Saturation coefficient 1	0.0000000000000000089283669812
Saturation coefficient 2	-0.008682328907048
Saturation coefficient 3	-0.0000000000000000003881898687
Coefficient 2_1	0.000210624396135302 N.m/rpm
Temperature copper hot	275 °F (135 °C)
Temperature magnet hot	212 °F (100 °C)
Temperature magnet rt	68 °F (20 °C)

Motor voltage drop coefficient	1
--------------------------------	---

## Ordering and shipping details

Category	US1PC5318282
Discount Schedule	PC53
GTIN	3606485207865
Returnability	No
Country of origin	DE

## Packing Units

Unit Type of Package 1	PCE
Number of Units in Package 1	1
Package 1 Height	7.87 in (20.0 cm)
Package 1 Width	10.43 in (26.5 cm)
Package 1 Length	23.62 in (60.0 cm)
Package 1 Weight	33.03 lb(US) (14.98 kg)

## Contractual warranty

Warranty	18 months
----------	-----------

Schneider Electric aims to achieve Net Zero status by 2050 through supply chain partnerships, lower impact materials, and circularity via our ongoing “Use Better, Use Longer, Use Again” campaign to extend product lifetimes and recyclability.

[Environmental Data explained >](#)


[How we assess product sustainability >](#)

Environmental footprint	
Environmental Disclosure	<a href="#">Product Environmental Profile</a>

Use Better

Materials and Substances	
<a href="#">EU RoHS Directive</a>	Pro-active compliance (Product out of EU RoHS legal scope)
California proposition 65	WARNING: This product can expose you to chemicals including: Lead and lead compounds, which is known to the State of California to cause cancer and birth defects or other reproductive harm. For more information go to <a href="http://www.P65Warnings.ca.gov">www.P65Warnings.ca.gov</a>
PVC free	Yes

Use Again

Repack and remanufacture	
Circularity Profile	No need of specific recycling operations
WEEE	 The product must be disposed on European Union markets following specific waste collection and never end up in rubbish bins.