



KB/EXH SERIES

ENCLOSURES

KB SERIES FLAME ARRESTOR

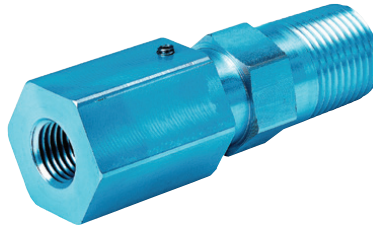
FEATURES-SPECIFICATIONS

Applications

The flame arrestor provides a means to connect gas analysis equipment and electro pneumatic devices' pipe or tubing system through the wall of an explosion-proof enclosure.

Body Material: 6061-T6 series aluminum provided as standard. Optional stainless steel or brass for special orders.

ATEX/IEC Ex Certified



Class I, Div. 1 & 2, Groups B[Ⓢ], C, D
 Class I, Zones 1 & 2, Groups IIB + H2[Ⓢ]
 Class II, Div. 1 & 2, Groups E, F, G
 Class III, NEMA Type 3, 4[Ⓢ]
 II 2 G Ex d IIB IIC[Ⓢ] T3 Gb IP66[Ⓢ]
 Ex tb IIIC IP65/IP66[Ⓢ]
 Ta = -50°C to +60°C

Ex Certified - File LR11716
 IEC Ex CSA 10.0007U
 SIRA 10ATEX1351U



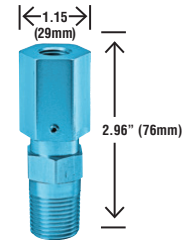
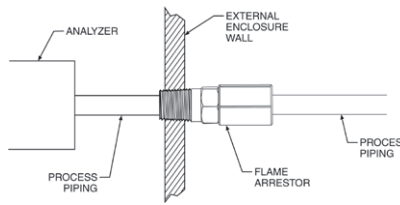
Ⓢ See chart below for suitability
 Ⓢ Warning – not for use in acetylene atmospheres

CATALOG NUMBER	EXTERNAL THREAD SIZE	INTERNAL THREAD SIZE	THIRD PARTY	SUITABILITY USA	THIRD PARTY	SUITABILITY CANADA	THIRD PARTY	SUITABILITY ATEX/IEC Ex
KB1FA25	1/2 NPT	1/4 NPT	CSAus	CLASS I GROUPS B, C & D CLASS I, ZONES 1 & 2 GR IIB+H2 CLASS II GROUPS E, F, & G CLASS III TYPE 3 & 4	c CSA c CSA	CLASS I GROUPS C & D CLASS I, ZONES 1 & 2 GR IIB CLASS II GROUPS E, F & G CLASS III TYPE 3 & 4	SIRA/CSA	II2 G Ex d IIC [Ⓢ] T3 Gb IP66
KB1FAM16 KBM20FA25 KBM20FA16	1/2 NPT M20 M20	M16 1/4 NPT M16	CSAus CSAus CSAus	CLASS I GROUPS B, C & D CLASS I ZONES 1 & 2 GR IIB+H2 CLASS II GROUPS E, F & G CLASS III TYPE 3	c CSA c CSA c CSA	CLASS I GROUPS C & D CLASS I, ZONES 1 & 2 GR IIB CLASS II GROUPS E, F & G CLASS III TYPE 3	SIRA/CSA SIRA/CSA SIRA/CSA	II 2 G Ex d IIC T3 Gb IP65

Specifications

Air flow = 83 + 15 / -25 SCFH at 5PSI
 Pressure drop = 1.3 PSI at 100 PSI
 Maximum flow pressure = 800 PSI
 Volume = For use in enclosures with a maximum internal volume of 9526 cubic inches or 160 liters.

TYPICAL INSTALLATION



EXH SERIES CIRCUIT BREAKER HANDLES

FEATURES-SPECIFICATIONS

Applications

EXH Series circuit breaker handles are for use with the following Series of Killark enclosures: EXB, DB, B7E

- Used to activate circuit breakers and motor circuit protectors from front cover
- Factory or field installed in a 3/4" NPSM opening for EXH1 & EXH2 and a 1-1/4" NPSM for EXH3
- Has provision for Lock-On and Lock-Off with up to three padlocks
- Consists of an external handle mechanism with through-the-enclosure shaft and internal toggle mechanism and breaker pan

Materials

- Copper free aluminum with 316 stainless steel shaft and screens
- O-ring 70 durometer nitrile



EXH

Class I, Div. 1 & 2, Groups B,C,D
 Class I, Zones 1 & 2, Groups IIB+H₂, IIA
 Class II, Div. 1 & 2, Groups E, F, G
 Class III, Encl. Type 3, 4 & 4X
 NEMA 3, 4, 4X, 7 (B,C,D) 9 (E,F,G)

UL LISTED - File E150827

SP Certified - File LR11714

EXH CIRCUIT BREAKER HANDLE WITH SHAFT AND PAN					
CATALOG NUMBER			BREAKER MANUFACTURER	BREAKER FRAMES TO OPERATE	MAX. AMPS
6" DEEP BOX	8" DEEP BOX	10" DEEP BOX			
EXH1A6	EXH1A8	EXH1A10	GE	TEB-TED-THED-TEL	150
			ITE/Siemens	ED2-ED4-ED6-HED4-HED6	125
			Square D	FAL-FHL-FCL	100
			Cutler Hammer	EHD-FDB-FD-HFD-FDC-HMCP	150
N/A	EXH1B8	EXH1B10	GE	TFJ-TFK-THFK-TFL	225
			Square D	KAL-KHL-KCL	250
			Cutler Hammer	JDB-JD-HJD-JDC	250
			GE	DK-KDB-KD-HKD-KDC	400
N/A	EXH2C8	EXH2C10	GE	TJJ-TJK4-TJK6-THJK4-THJK6	600
			ITE/Siemens	FXD6-FD6-HFD6-CFD6	250
			ITE/Siemens	JXD2-JXD6-JD6-HJD6-HHJD6-CJD6	400
			ITE/Siemens	LXD6-LD6-HKD6-HHLD6-CLD6	600
N/A	EXH3D8	EXH3D10	Square D	LAL-LHL	400
			Cutler Hammer	LDB-LD-HLD-LDC	600
			GE	TKM8-THKM8-TKM12-THKM12	1200
			ITE/Siemens	MXD6-MD6-HMXD6-HMD6-CMD6	800
N/A	N/A	EXH3E10	ITE/Siemens	NXD6-ND6-HNXD6-HND6-CND6	1200
			Square D	LCL	600
			Square D	MAL-MHL	1000
			Cutler Hammer	ND-HND-NDC	1200

Submit sketch showing the desired location of internal breaker for factory location of handle mechanism. Order as separate option with enclosure for factory installation or by Catalog Number for field installation. Consult factory for handle mechanism for fused and non-fused disconnect switches.