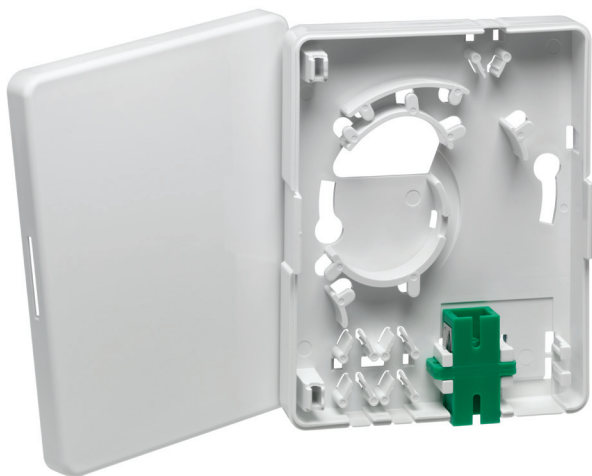


Fiber-to-the-Home Point of Entry Box

APPLICATION

The Leviton Fiber-to-the-Home (FTTH) Point of Entry Box is designed for applications in Multiple Dwelling Units (MDU) and single family homes. The FTTH Point of Entry Box provides a convenient location to terminate a fiber coming from a service provider to pigtails at the subscriber's premises. It can be mounted in a Structured Media® Enclosure or as a stand-alone unit on a wall. The entry box provides a staging demarcation point with quick and easy access for activation as residents request FTTH service.



FEATURES

- Provides convenient location to terminate incoming fiber from a service provider
- Can mount inside a Structured Media enclosure or as a stand-alone unit on a wall
- Includes magnet for easy installation and place adjustments

DESIGN CONSIDERATIONS

- Product includes:
 - One (1) mini box base
 - One (1) mini box lid
 - One (1) Green SC/APC Adapter with two (2) dust caps
 - Two (2) zip ties
 - Two (2) dry-wall anchors
 - Two (2) screws
 - Two (2) splice sleeves
 - One (1) adhesive magnet for Structured Media enclosure mounting

PHYSICAL SPECIFICATIONS

Dimensions: See page 2
Color: White
Material: ABS Plastic

SPECIFICATION

The Fiber-to-the-Home Point of Entry Box shall provide a location to terminate fiber from a service provider, and shall serve as a staging point prior to service activation. The FTTH Entry Box shall allow mounting inside a Structured Media Enclosure with included adhesive magnet or directly to the wall with included dry-wall anchors and screws.

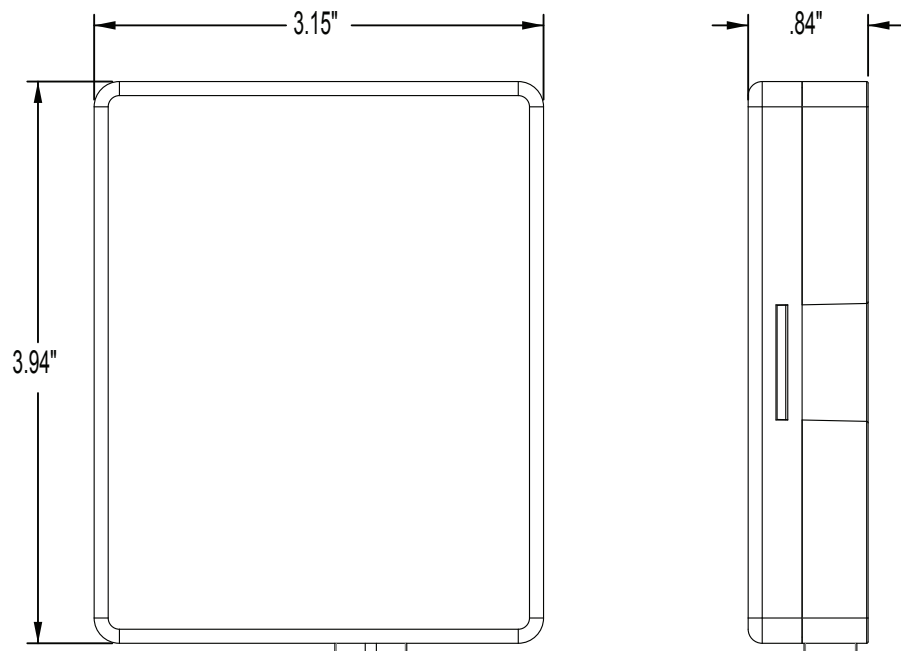
WARRANTY INFORMATION

For a copy of Leviton product warranties, visit www.leviton.com/warranty.

FTH00-00W

ELECTRONIC FILES

For CAD files, typical specs, or technical drawings (.DXF, .DWG), visit www.leviton.com.



FTH00-00W

PART NUMBERS

Description

Part No.

FTTH Point of Entry Box

FTH00-00W