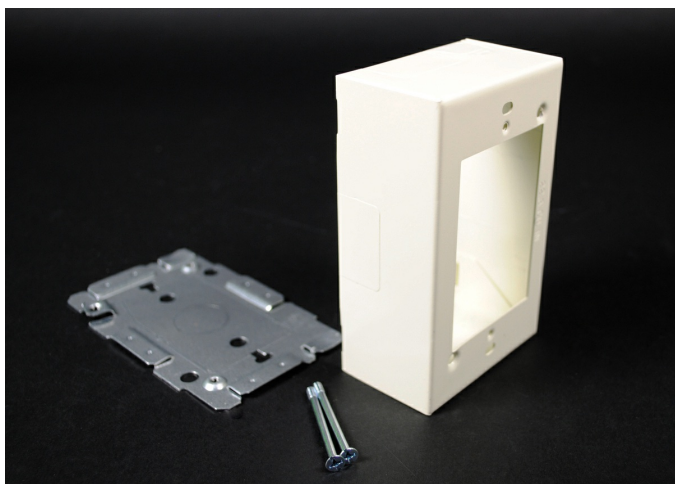




Wiremold
Wiremold 2000 Series Single-Gang Device Box Fitting, Ivory
Part No. V2048



The Wiremold 2000 Series raceway offers a selection of steel, aluminum, and nonmetallic raceways that provide a versatile solution for many applications. Plugmold sections offer single or alternating circuits, in standard or isolated ground receptacles. The ScuffCoat finish is scratch resistant and protects against nicks and chips while preventing color from fading.

Features & Benefits

This product meets the material restrictions of RoHS

Specifications

General Info

Product Line	Wiremold	Replaced by Part Number	CV2048
Color	Ivory	UPC Number	786776037449
Country Of Origin	United States	Material	Steel
Product Series	2000 Series	Application Sector	Commercial, Education, Entertainment, Healthcare, Hospitality, Retail
Standard	cULus Listed Surface Metal Raceway: File E41751: Guide RJPR	Warranty Type	1-Year from Installation or 2-Years from Day of Sale
Type	Device Box		

Dimensions

Product Width US	2.875 in	Product Weight US	0.6 lb
Product Depth US	1.75 in	Product Height US	1.75 in

Product Length US 4.7343 in

Additional Information

RoHS Compliant Yes

Product Environmental Profile Yes

Technical Information

Indoor/Outdoor Indoor

Mounting Type On Surface

Voltage 300.0 V

Environmental Conditions Dry interior locations
