

Pipe Straps, Conduit Clamps and Hangers

Structure Attachments

M-742-R Ceiling Flange

M-742-R, M-742-RB, MT-742-R — Single Plate

M-742-R — (Rod Tapped — Electro-Galvanized)

M-742-RB — (Rod Tapped — Plain Finish)

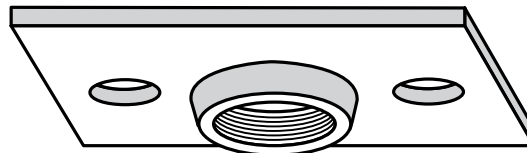
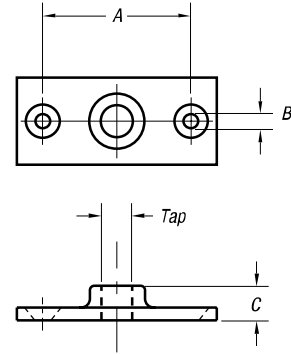
MT-742-R — (Rod Tapped — Copper Finish)

Designed for attaching a rod to a wooden member.

This part is normally used in conjunction with our M-718 Split Ring.

Specifications

- Material: Malleable Iron, M-742-R is Carbon Steel.
- Ordering: Specify rod size and catalog number.



M-742-R
Rod Sizes: 3/8" & 1/2"

CAT. NO.	ROD TAP (IN.)	MAX. LOAD (LBS.)	DIMENSIONS (IN.)			WT. EACH (LBS.)
			A	B	C	
M-742-R-3/8	3/8	180	2	1/4	1/2	.19
M-742-R-1/2	1/2	180	2	1/4	1/2	.18

Standard Finish — Black (B), EG (Silver) or Copper-Colored Epoxy Paint.

C-736-Side Clip — Steel Bracket Clip

Clip can be used to support piping 3 1/2" or smaller from the horizontal member of a C-736 Steel Bracket. The clip is composed of two steel plates and one bolt and nut.

Specifications

- Material: Carbon Steel
- Ordering: Specify size number, catalog number and finish.
- Finish: Standard Finish — GoldGalv®, Black (add suffix "B"), Electro-Galvanized (add suffix "EG")

CAT. NO.	ROD SIZE (IN.)	SIZE (IN.)	MAX. LOAD (LBS.)	WT. EACH (LBS.)
C-736-SIDE CLIP-1	1	3/4	750	6.99
C-736-SIDE CLIP-2	2	1/2	750	10.10

Standard Finish — GoldGalv®, unless otherwise stated.