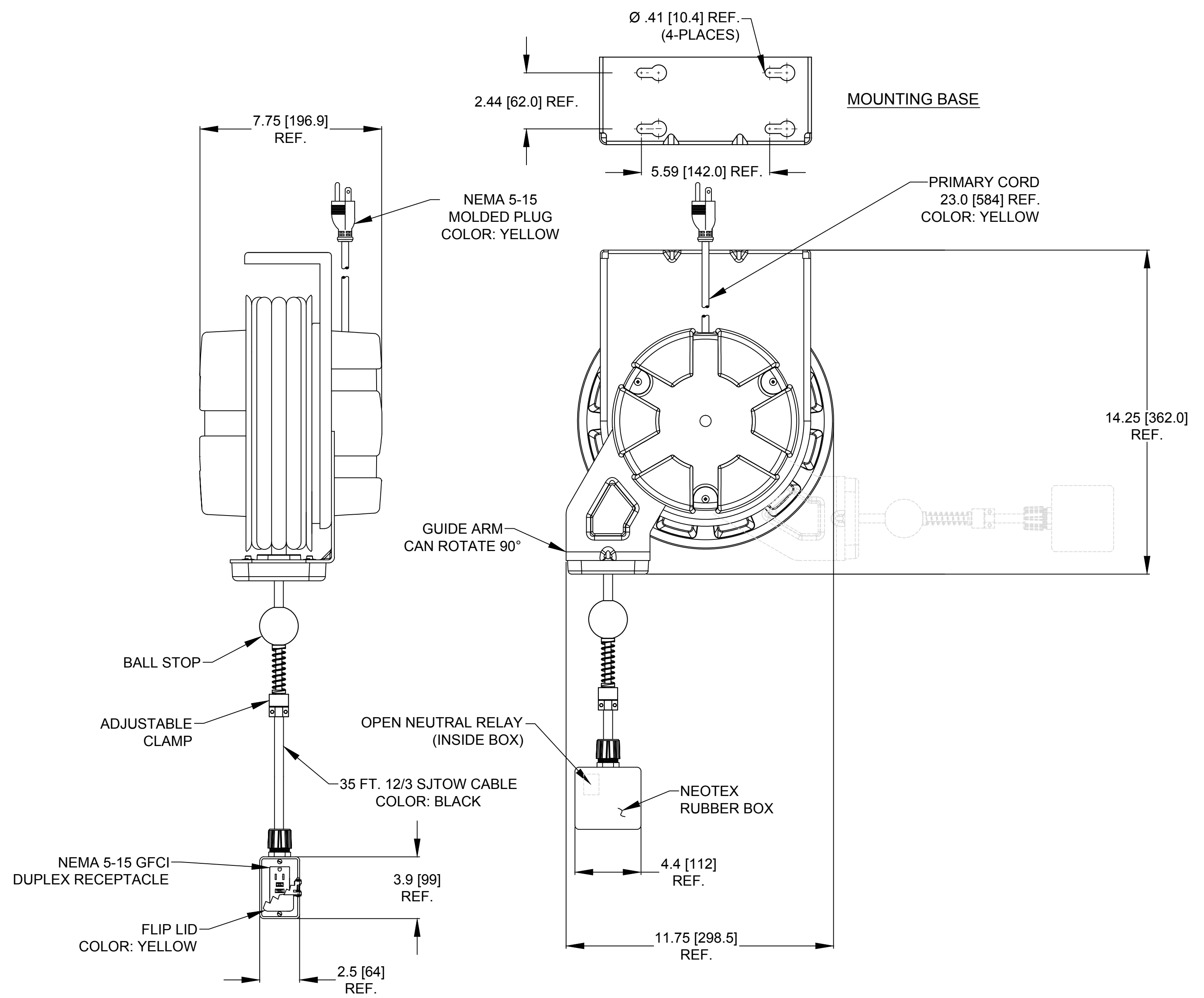



ORDER NO.	1300910094
WOODHEAD ENG. NO.	997-3070G
WIRE GAUGE	12
CONDUCTORS	3
AMPERAGE	15A
CORD LENGTH	35 FT [10.6 M]
CORD TYPE	SJTOW
CONSTRUCTION	SHEET METAL
PAINT	YELLOW POWDER COAT
REEL ENCLOSURE RATING	INDOOR
RETRACTION WEIGHT	3.0 LB [1.4 KG]



- NOTES:**
1. CABLE GUIDE IS ADJUSTABLE - DUAL POSITION
 2. RATCHET LOCK IS EASY TO DISENGAGE FOR CONSTANT TENSION.
 3. REEL CANNOT BE "LOCKED OUT" AT FULL TENSION.
 4. BALL STOP INCLUDED
 5. CSA CERTIFIED
FILE NO. LR29921 

RELEASE SALES DRAWING EC NO.: IPG2016-0112 DRWN: KCOX01 2015/07/31 CH'KD: HRUIZ01 2015/07/31 APPR: JFMURPHY 2015/09/17 REV A	QUALITY SYMBOL $\nabla=0$ $\nabla C=0$	GENERAL TOLERANCES (UNLESS SPECIFIED) mm INCH 4 PLACES \pm --- \pm --- 3 PLACES \pm --- ± 0.005 2 PLACES ± 0.13 ± 0.010 1 PLACE ± 0.25 ± 0.020	DIMENSION STYLE INCH/MM DRAWN BY DATE KCOX01 2015/07/31 CHECKED BY DATE HRUIZ01 2015/07/31 APPROVED BY DATE JFMURPHY 2015/09/17	SCALE NTS DESIGN UNITS INCH THIRD ANGLE PROJECTION	TITLE 15A CORDREEL W/3070G GFI 35' #12-3 SJTOW NEMA 5-15 PLUG	
			MATERIAL NO. 1300910094	MOLEX INCORPORATED	SHEET NO. 1 OF 1	
			DRAFT WHERE APPLICABLE MUST REMAIN WITHIN DIMENSIONS	MOLEX INCORPORATED		
				THIS DRAWING CONTAINS INFORMATION THAT IS PROPRIETARY TO MOLEX INCORPORATED AND SHOULD NOT BE USED WITHOUT WRITTEN PERMISSION		