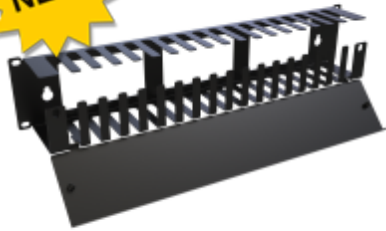




Quality Products. Service Excellence.

Horizontal Steel Finger Cable Manager *RB-HSF Series*



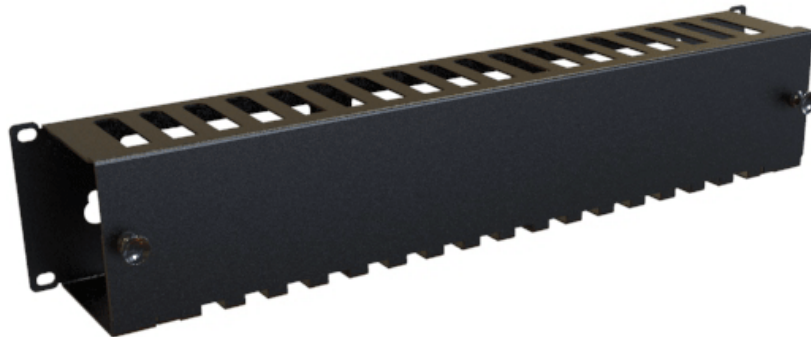
Features:

- Constructed in 16-gauge steel.
- Snap open, lift-off/hinged door.
- Openings in the rear for cable entry.
- Designed to fit standard 19" rails.
- Requires mounting hardware.
- Includes wall mounting points for non-rackmount applications.
- Finished in textured RAL9005 black powder paint finish.
- TAA-compliant for GSA Schedule purchases.
- RoHS Compliant.
- Manufactured in North America within an ISO 9001:2015 certified facility.



Accessories

- Mounting Hardware



Part No.	Height	Overall Dimensions			Rack Units
		Width	Depth		
RB-HSF1	1.75	19.00	3.06		1U
RB-HSF2	3.50	19.00	3.06		2U

Estimated Cable Fill Capacities

Rack Units	Description	Opening Quantity	Recommended Cable Fill (50% Fill Ratio)			Maximum Cable Fill (100% Fill Ratio)		
			Cat 5e	Cat 6	Cat 6a	Cat 5e	Cat 6	Cat 6a
1U	Channel Opening	1	35	22	16	70	45	31
	Per Finger Opening	36	16	10	8	32	20	14
	Rear Pass Through	3	63	26	18	82	52	54

Horizontal Steel Finger Cable Manager (RB-HSF Series) - Hammond Mfg.

Rack Units	Description	Opening Quantity	Recommended Cable Fill (50% Fill Ratio)			Maximum Cable Fill (100% Fill Ratio)		
			Cat 5e	Cat 6	Cat 6a	Cat 5e	Cat 6	Cat 6a
2U	Channel Opening	1	76	48	34	151	97	67
	Per Finger Opening	36	16	10	8	32	20	14
	Rear Pass Through	3	63	26	18	82	52	54

Data subject to change without notice

© 2022. Hammond Manufacturing Ltd. All rights reserved.