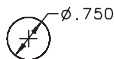
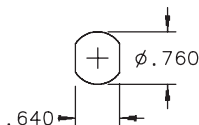
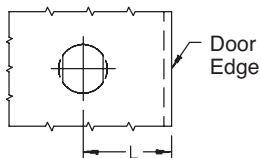


# Cylinder Lock Kit

Mounting Hole Required



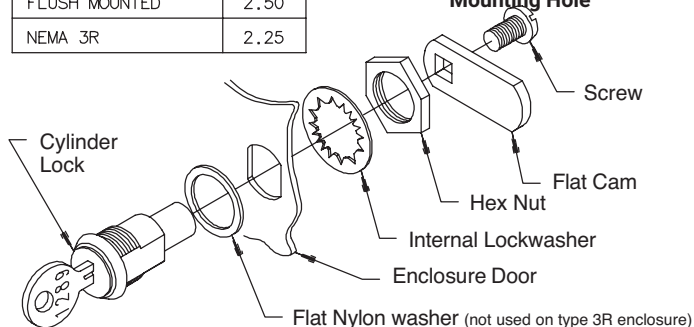
Drilled Hole



Punched Hole  
(Preferred)

ENCLOSURE	L
NEMA 12 OR 4	1.69
FLUSH MOUNTED	2.50
NEMA 3R	2.25

Location of  
Mounting Hole



## WARNING

To avoid electric shock, do not energize any circuits before all internal and external electrical and mechanical clearances are checked to assure that all assembled equipment functions safely and properly.