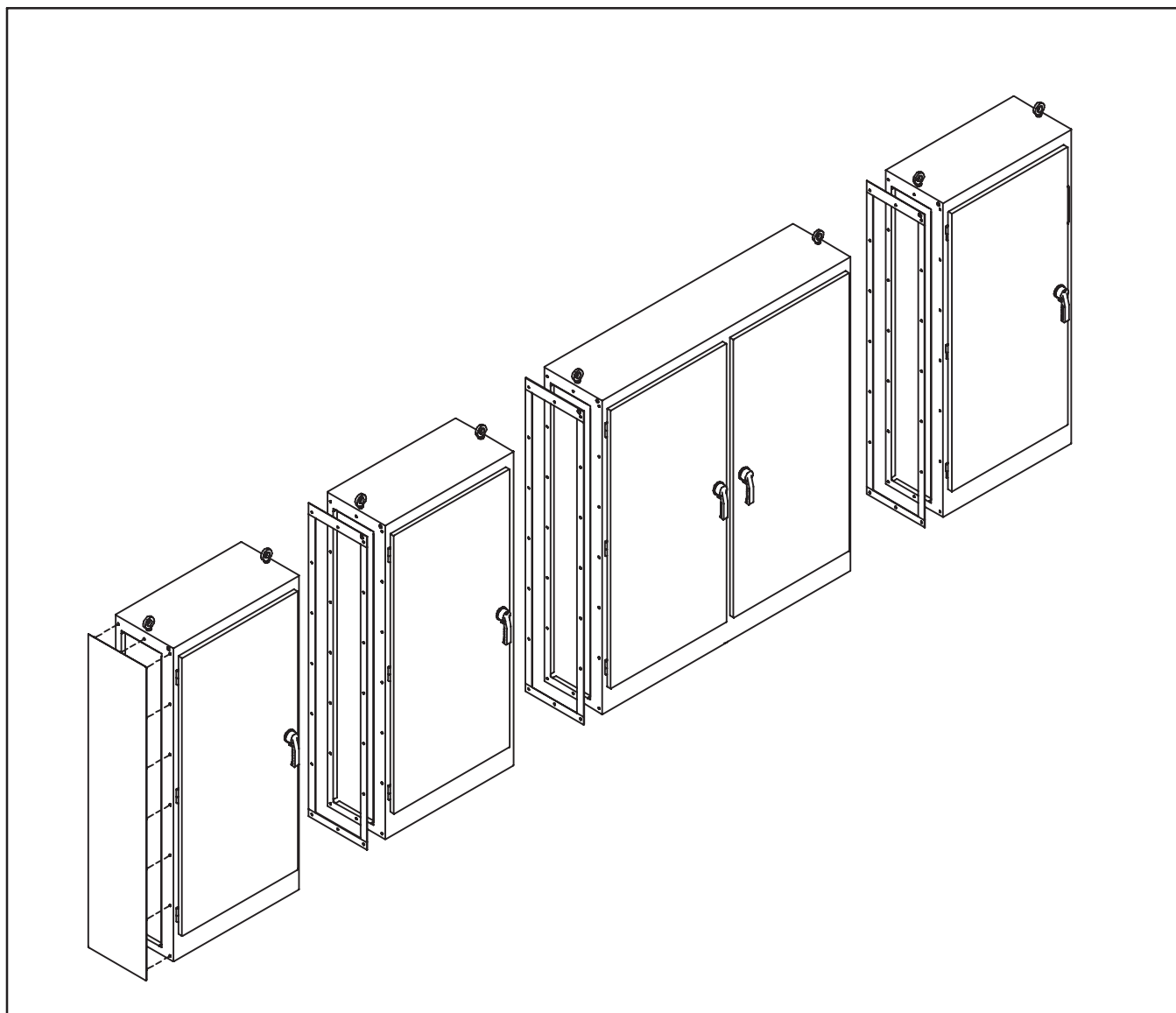
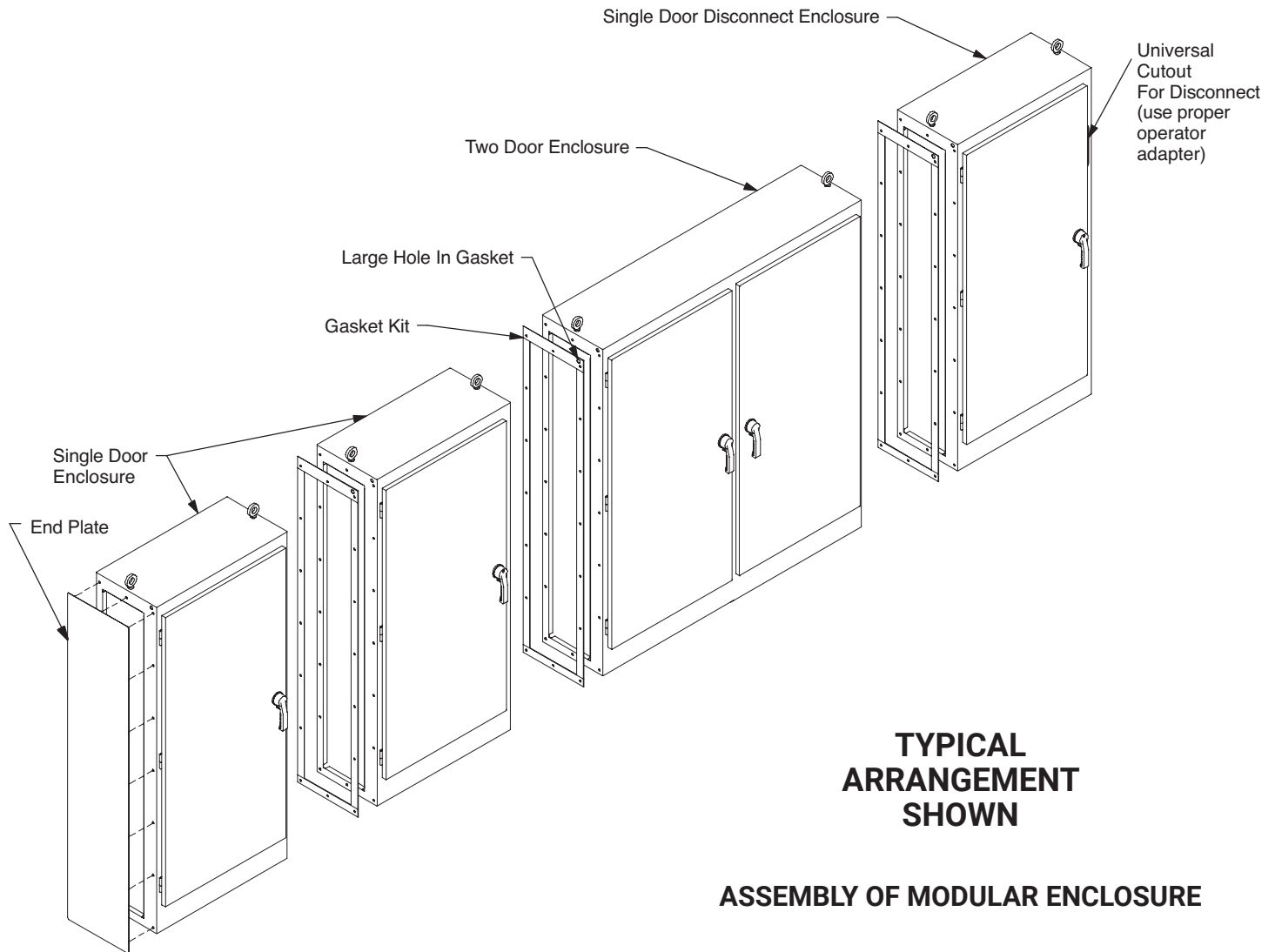


Heavy-Duty Modular Enclosure



ASSEMBLY OF MODULAR ENCLOSURE



TYPICAL ARRANGEMENT SHOWN

ASSEMBLY OF MODULAR ENCLOSURE

Place modular enclosures in desired arrangement. The master disconnect enclosure must be positioned at the far right side. This enclosure has provisions for a flange mounted disconnect on the right flange. Additional single door and two door modular enclosures can be arranged in any order. Enclosures are joined using a gasket kit. A flat end plate or end plate is then installed on the side of the far left enclosure in the assembly.

STEP 1: Position enclosures about 1/2 inch apart.

STEP 2: Install gasket between enclosures. Position gasket with three inch wide end at top and large hole in gasket positioned toward front of the enclosures.

STEP 3: Install screws through sides of enclosures and through gasket. Install lockwashers and nuts. Tighten nuts so gasket is compressed evenly between enclosures.

STEP 4: Position end plate on side of modular enclosure. (gasket is attached to end plate) Install screws through side of enclosure and the end plate. Install lockwashers and nuts. Tighten nuts so gasket is compressed evenly between enclosure and end plate.

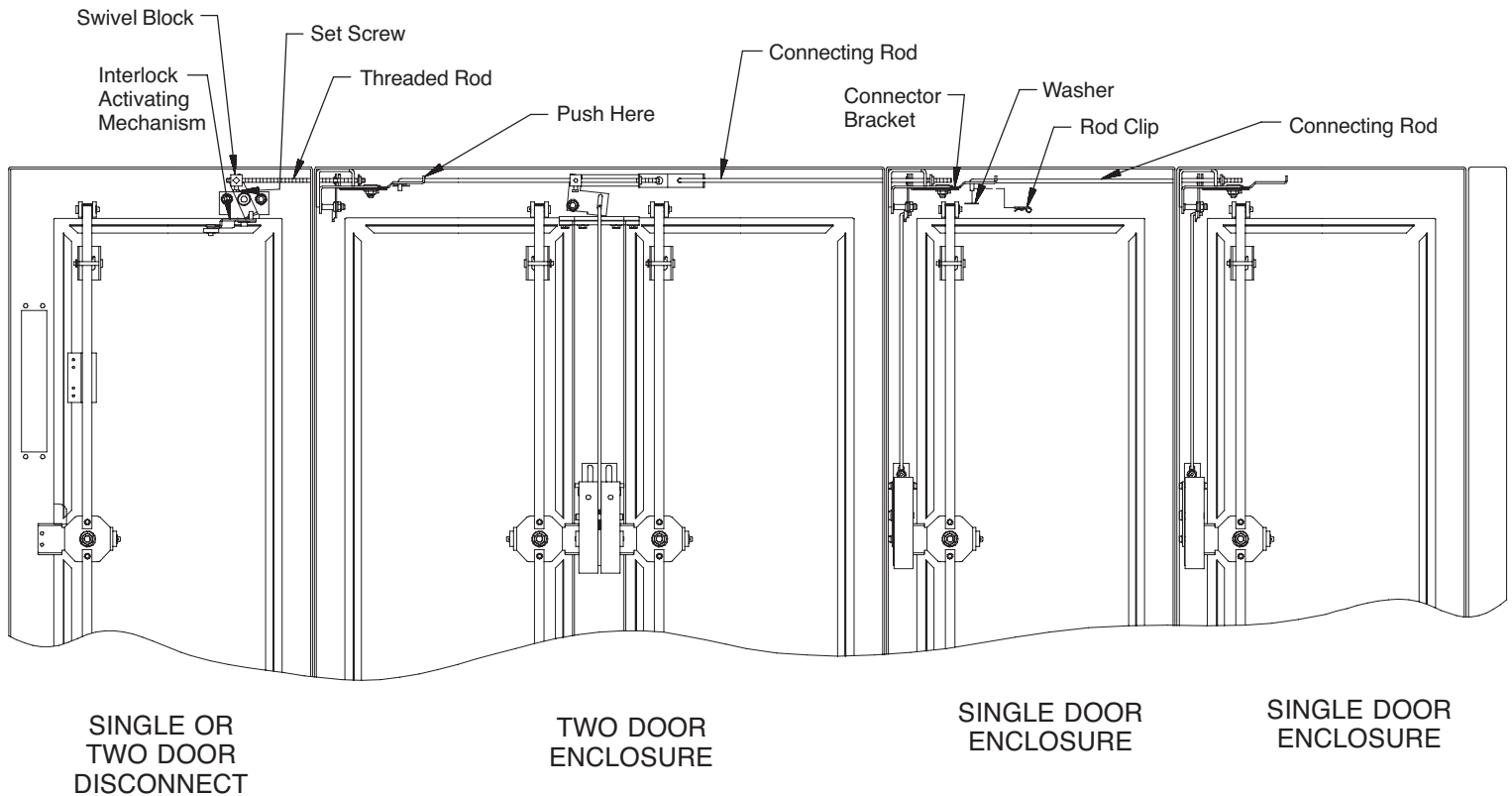
WARNING

The functions, fits, and clearances of the installation described hereon are calculated from information supplied by the manufactures of the equipment to be installed. Be certain to check the function, fits, and clearances of all equipment both before and after installation to assure that it operates properly and safely and meets all applicable codes, standards, and regulations.

In the event the completed installation does not function properly or fails to meet any such codes, standards, or regulations, do not attempt to make alterations or operate the equipment. Report such facts immediately to:

Hoffman Customer Service
2100 Hoffman Way
Anoka, MN 55303
763 422 2211
<http://hoffman.nvent.com/contact-us>

ASSEMBLY OF MECHANICAL INTERLOCK FOR MODULAR ENCLOSURES



NOTE: View from inside enclosure.

ASSEMBLY OF MECHANICAL INTERLOCK FOR MODULAR ENCLOSURE

The master modular disconnect enclosure has an interlock activating mechanism above the master door. The single and two door modular enclosures include a connecting rod and rod clip. The connecting rod is installed between interlocks in adjoining enclosures. The interlock activating mechanism must be connected to the interlock inside a single door or two door modular enclosure. Follow step 1 and step 2 to connect the first interlock to the activating mechanism. Then follow step 3 and step 4 to connect additional interlocks.

HOW TO CONNECT INTERLOCK ACTIVATING MECHANISM TO ADJOINING INTERLOCK

STEP 1: Above master door there is a interlock activating mechanism. Loosen set screw that holds the horizontal threaded rod in place. Slide threaded rod through the hole provided between enclosures. Thread end of this rod into connector bracket in the adjoining enclosure. Thread rod into connector bracket about ten full turns.

STEP 2: Close master door to activate interlock. Reach through open door of adjoining enclosure and push connector bracket toward activating mechanism until it stops. Also push swivel block on activating mechanism toward connector bracket until it stops. Hold connector bracket and swivel block in this position and tighten set screw. (see step 5 to check interlock operation)

STEP 3: Open door of adjoining enclosure. Remove connection rod, washer, and rod clip furnished with enclosure. Insert threaded end of connecting rod through the hole provided between enclosures. Thread the end of the rod into the connector bracket in the adjoining enclosure.

STEP 4: Close master door to activate the existing interlock in the other enclosures. Then pull formed end of connecting rod (installed in step 3) toward connector bracket. This pulls the interlock in the adjoining enclosure to the "locked" position. Continue to thread connecting rod into adjoining connector bracket until connecting rod is short enough to install formed end in other connector bracket. Captivate connecting rod with washer and rod clip. (see step 5 to check interlock operation)

STEP 5: Close and latch all doors in modular assembly. Attempt to open each slave door. The interlock system should prevent all slave door handles from being rotated. Then open master door to deactivate the interlock. Each slave door handle should now rotate so slave door can be opened. All doors can be closed in any order. Further adjustment may be required if the interlock does not operate in the manner described. Repeat adjustments in step 1 and step 4 if necessary.

