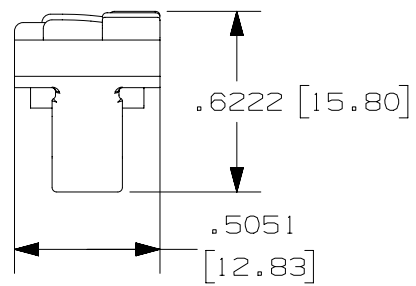
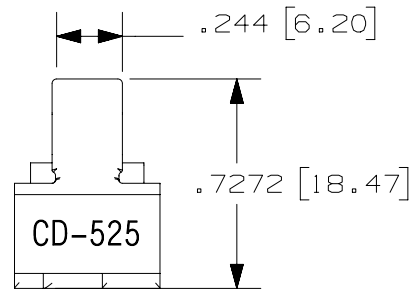
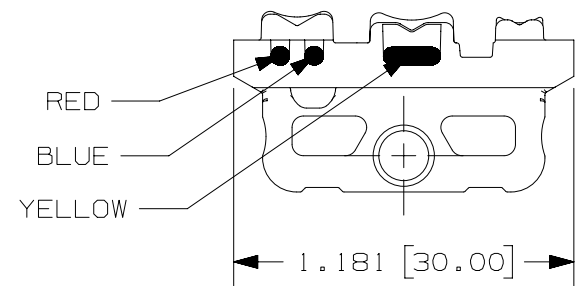
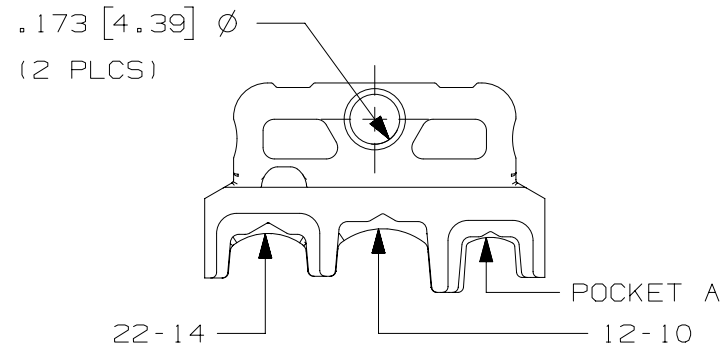


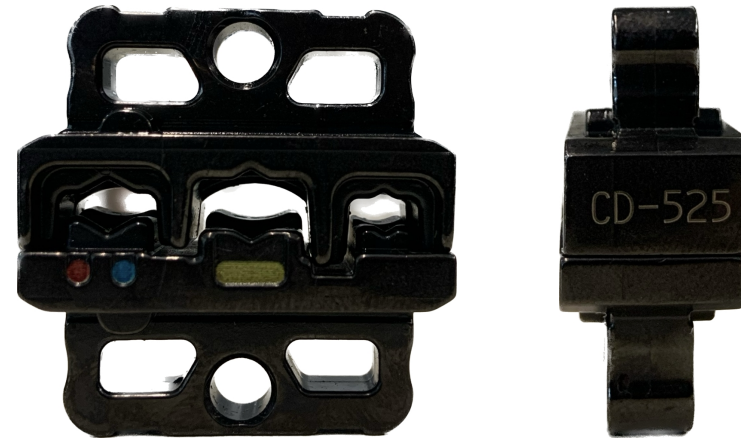
22-14	12-10	PKT
0,5-2,5	4,0-6,0	A

22-14 12-10 PKT
0,5-2,5 4,0-6,0 A



NOTES, UNLESS OTHERWISE SPECIFIED:

- PART MUST BE RoHS COMPLIANT.
- PANDUIT PART #: CD-525
- DIE SET TO BE LUBRICATED TO PREVENT CORROSION IN TRANSIT.
- DIE INSERT SET WEIGHT: 1.58 OZ. (44.72 GRAMS)
- CT-2525CH OR CD-525:
DIE INSERT OR CRIMPING HEAD (NOT SHOWN) FOR INSTALLING THE FOLLOWING PANDUIT PRODUCTS:
#26-#22 AWG (0,14-0,5 mm²) INSULATED TERMINALS AND SPLICES,
#22-#10 AWG (0,5-6,0 mm²) FULLY INSULATED DISCONNECTS, INSULATED PARALLEL SPLICES; AND SPECIFIC #22-#14 AWG (0,5-2,5 mm²) BARREL INSULATED DISCONNECTS.
- DIE INSERT AND/OR THE CRIMPING HEAD (NOT SHOWN) INSTALLATION INSTRUCTIONS CAN BE FOUND AT www.panduit.com, SEARCH FOR CT-2525CH, CT-2550CH, CT-2570CH, CT-2500CH, CD-525, CD-550 OR CD-570.
- USED IN CT-2300 SERIES TOOLS, CT-2500CH AND CT-2525CH CRIMP HEADS.



POCKET SIZE	SHUT HT. PIN DIA	mm [IN]
PKT A	2,11-2,31	[.083- .091]
12-10	2,54-2,74	[.100- .108]
22-14	1,93-2,13	[.076- .084]

NOTE: PIN DIAMETER BASED UPON DIES BEING FULLY CLOSED.

REV	DATE	BY	CHK	APR	DESCRIPTION	ECN
01A	03/14/23	SAHR	--	MRWA	F. UPDATED DRAWING TITLE D. UPDATED DIE IMAGE C. REVISED WEIGHT (NOTE 4) B. REVISED POCKET SIZE CHART A. UPDATED TO MIM DIE MODEL	129341/00
00	10-23-2019	JEH	BJPU	JADE	RELEASED	053328

TITLE		CD-525 DIE SET	
CUSTOMER DRAWING			
ITEM REVISION NAME	R29571BA/01	PANDUIT	
DATASET FILE NAME	R29571BA_DC_TP29571B01/01A		
UNLESS OTHERWISE SPECIFIED, DIMENSIONAL TOLERANCES ARE: IN [mm]		MATERIAL:	
.X ± - - - - .XXX ± .005 [.127]	ANGLES ± - - - -	SEE NOTES	
THIRD ANGLE PROJECTION		DRAWING NUMBER:	
TP29571B01		SHT 1 OF 1	
DRAWN BY	DATE	CHK	SCALE
JEH	10-22-19	BJPU	NONE
SIZE		B	