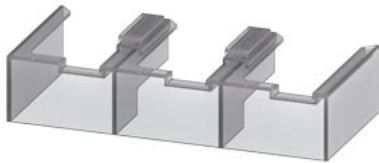


terminal cover on box terminal from 3RT1, 3RB2, 3RW405, 3RW442, 3RW443, 3RW507



product brand name
product designation
design of the product

SIRIUS
Covers for box terminals
Length 25 mm, additional touch protection for fitting at the box terminals (2 units required per device), can be used for 3UF71.3-1BA00-0, 3RW442. or 3RW443.
07/01/2006

Substance Prohibittance (Date)



Certificates/ approvals

General Product Approval	EMC	Declaration of Conformity
 Confirmation		
		

Declaration of Conformity	Test Certificates	Marine / Shipping
---------------------------	-------------------	-------------------

	Special Test Certificate	   
---	--	---

Marine / Shipping	other	Railway
-------------------	-------	---------

 	Confirmation	Miscellaneous
	Confirmation	Type Test Certificates/Test Report

Further information

Siemens has decided to exit the Russian market (see here).
<https://press.siemens.com/global/en/pressrelease/siemens-wind-down-russian-business>
 Siemens is working on the renewal of the current EAC certificates.
 Please contact your local Siemens office on the status of validity of the EAC certification if you intend to import or offer to supply these products to an EAC relevant market (other than the sanctioned EAEU member states Russia or Belarus).
Information on the packaging
<https://support.industry.siemens.com/cs/ww/en/view/109813875>
Information- and Downloadcenter (Catalogs, Brochures,...)
<https://www.siemens.com/ic10>

Industry Mall (Online ordering system)

<https://mall.industry.siemens.com/mall/en/en/Catalog/product?mlfb=3RT1956-4EA2>

Cax online generator

<http://support.automation.siemens.com/WW/CAXorder/default.aspx?lang=en&mlfb=3RT1956-4EA2>

Service&Support (Manuals, Certificates, Characteristics, FAQs,...)

<https://support.industry.siemens.com/cs/ww/en/ps/3RT1956-4EA2>

Image database (product images, 2D dimension drawings, 3D models, device circuit diagrams, EPLAN macros, ...)

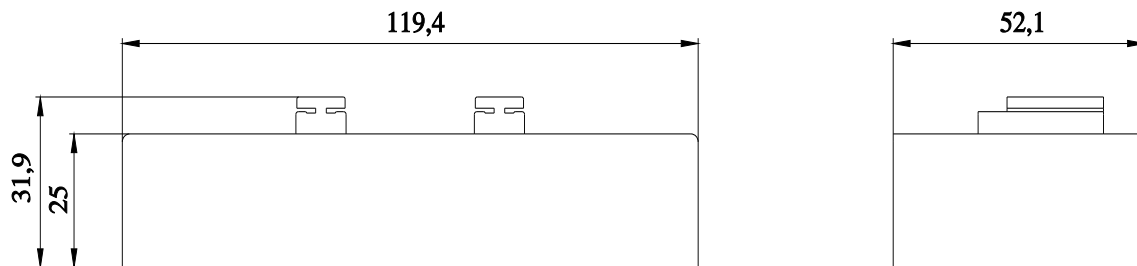
http://www.automation.siemens.com/bilddb/cax_de.aspx?mlfb=3RT1956-4EA2&lang=en

Characteristic: Tripping characteristics, I^t, Let-through current

<https://support.industry.siemens.com/cs/ww/en/ps/3RT1956-4EA2/char>

Further characteristics (e.g. electrical endurance, switching frequency)

<http://www.automation.siemens.com/bilddb/index.aspx?view=Search&mlfb=3RT1956-4EA2&objecttype=14&gridview=view1>



last modified:

1/18/2021 