

ALL	Cold Shrink Jacket Seal Restoration	200ECS
-----	-------------------------------------	--------



Features:

- Cold shrink jacket seal restoration kit.
- Easy to use place and pull install.
- Provides sealing and protection on jacketed concentric neutral cable.
- No tools required for install.

200ECS Cold Shrink Jacket Seal Restoration

Applications:

The 200ECS Cold Shrink Jacket Seal Restoration system is used with XLP, EPR, or other similar solid dielectric insulated power cables. The 200ECS is compatible with jacketed concentric neutral cables, and provides the necessary shielding for the compromised cable. The 200ECS can be used with a variety of Elastimold products including:

- 165LR
- 275LR
- 15PCJ

Ratings:

Meets ANSI/IEEE Standard 386, Latest Revision
 15kV Voltage Class
 8.3kV Max Phase-to-Ground – Operating Voltage
 14.4kV Max Phase-to-Phase
 95kV BIL – Impulse Withstand (1.2 x 50 microsecond wave)
 34kV AC – One minute withstand
 53kV DC – 15 minutes withstand
 11kV AC – Corona Extinction @ 3pC sensitivity
 200 Amp – Continuous and Loadbreak
 10kA Sym – 10 Cycles Momentary & Fault Close

25kV Voltage Class
 15.2kV Max Phase-to-Ground – Operating Voltage
 26.3kV Max Phase-to-Phase
 125kV BIL – Impulse Withstand (1.2 x 50 microsecond wave)
 40kV AC – One minute withstand
 78kV DC – 15 minutes withstand
 19kV AC – Corona Extinction @ 3pC sensitivity
 200 Amp – Continuous and Loadbreak
 10kA Sym – 10 Cycles Momentary & Fault Close

35kV Voltage Class
 21.1kV Max Phase-to-Ground – Operating Voltage
 36.6kV Max Phase-to-Phase
 150kV BIL – Impulse Withstand (1.2 x 50 microsecond wave)
 50kV AC – One minute withstand
 103kV DC – 15 minutes withstand
 26kV AC – Corona Extinction @ 3pC sensitivity
 200 Amp – Continuous and Loadbreak
 10kA Sym – 10 Cycles Momentary & Fault Close

Issue Date: 3/16/2012

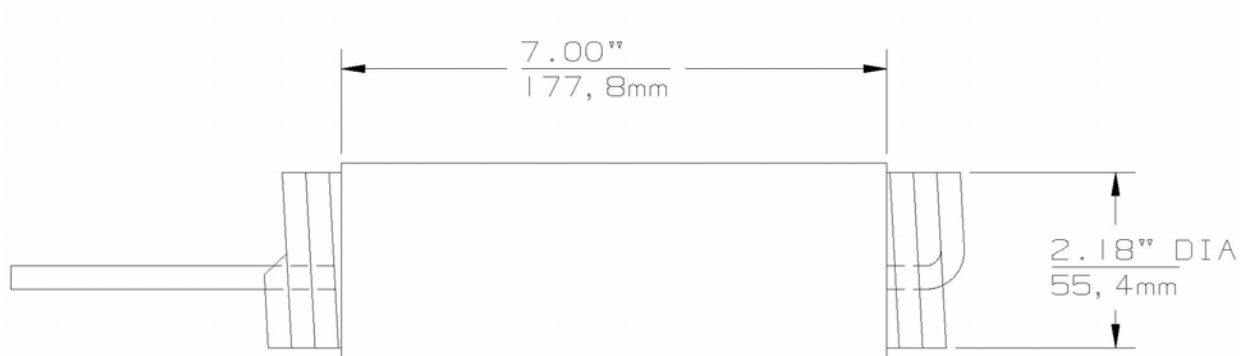
Page: 2 of 2

File: PSS-200ECS

ALL

Cold Shrink Jacket Seal Restoration

200ECS



Jacket Outside Diameter Range

Min	Max
0.80"	1.50"

Ordering Instructions:

To order jacket seal restoration kit, specify number **200ECS**.

Each kit contains the following:

1 Jacket Seal Restoration 200ECS

Notes:

To add the 200ECS to any part number just add the suffix "-S" to any already configured part number.