

# Product data sheet

Specifications

SQUARE D



NEMA motor starter, Type S, nonreversing, Size 2, 45A, 25HP at 460VAC, 5kA SCCR, 3 phase, 3 pole, melting alloy, 120VAC coil, open [TAA]

8536SDO1V02S

Product availability: Stock - Normally stocked in distribution facility

## Main

Product Type	Motor starter
Product Range	S
Starter Type	Non reversing

## Complementary

NEMA Size	2
Rated Current	45 A
Number of Poles	3P
Maximum Voltage Rating	600 V AC
Phase	3 phase
Type of Overload	Melting alloy 3
Horsepower Rating	10 HP 200 V AC 15 HP 230 V AC 25 HP 460 V AC 25 HP 575 V AC
SCCR	Circuit-breaker: 5 kA at 600 V AC Fuse: 5 kA at 600 V AC
Coil Voltage	110 V AC 50 Hz 120 V AC 60 Hz
Control Circuit Type	Separate control circuit
Control Units	No control units
Pilot Light	Without pilot light
Auxiliary Contacts	Without
Terminal Type	Screw clamp terminals
Height	7.81 in (198.37 mm)
Width	4.31 in (109.47 mm)
Depth	4.94 in (125.48 mm)

## Environment

Enclosure Type	Not rated (open device)
Certifications	UL Listed CSA NEMA

Price is "List Price" and may be subject to a trade discount – check with your local distributor or retailer for actual price.

## Ordering and shipping details

Category	US10CP121192
Discount Schedule	0CP1
GTIN	785901882121
Returnability	Yes
Country of origin	MX

## Packing Units

Unit Type of Package 1	PCE
Nbr. of units in pkg.	1
Package 1 Height	7.000 in (17.780 cm)
Package 1 Width	6.700 in (17.018 cm)
Package 1 Length	9.400 in (23.876 cm)
Package weight(Lbs)	6.700 lb(US) (3.039 kg)
Unit Type of Package 2	PAL
Number of Units in Package 2	104
Package 2 Height	40.000 in (101.600 cm)
Package 2 Width	40.000 in (101.600 cm)
Package 2 Length	48.000 in (121.920 cm)
Package 2 Weight	706.0001 lb(US) (320.236 kg)

## Compliance

Compliance	TAA Compliant
------------	---------------

## Contractual warranty

Warranty (in months)	18
----------------------	----



## Environmental Data

Schneider Electric aims to achieve Net Zero status by 2050 through supply chain partnerships, lower impact materials, and circularity via our ongoing “Use Better, Use Longer, Use Again” campaign to extend product lifetimes and recyclability.

[Environmental Data explained >](#)

[How we assess product sustainability >](#)



### Environmental footprint

Total lifecycle Carbon footprint	428 kg CO2 eq.
Carbon footprint of the manufacturing phase [A1 to A3]	22 kg CO2 eq.
Carbon footprint of the distribution phase [A4]	3 kg CO2 eq.
Carbon footprint of the installation phase [A5]	0.3 kg CO2 eq.
Carbon footprint of the use phase [B2, B3, B4, B6]	398 kg CO2 eq.
Carbon footprint of the end-of-life phase [C1 to C4]	5 kg CO2 eq.
Environmental Disclosure	<a href="#">Product Environmental Profile</a>

### Use Better



### Materials and Substances

Packaging made with recycled cardboard	Yes
Packaging without single use plastic	Yes
SCIP Number	452c762d-6c46-4fda-b2dc-ffe853b697e8
EU RoHS Directive	<a href="#">Compliant</a>
REACH Regulation	<a href="#">Reference contains Substances of Very High Concern above the threshold</a>
California proposition 65	<b>WARNING:</b> This product can expose you to chemicals including: Lead and lead compounds, which is known to the State of California to cause cancer and birth defects or other reproductive harm. For more information go to <a href="http://www.P65Warnings.ca.gov">www.P65Warnings.ca.gov</a>
PVC free	Yes

### Use Longer



### Lifetime extension

Repair	No
--------	----

### Use Again



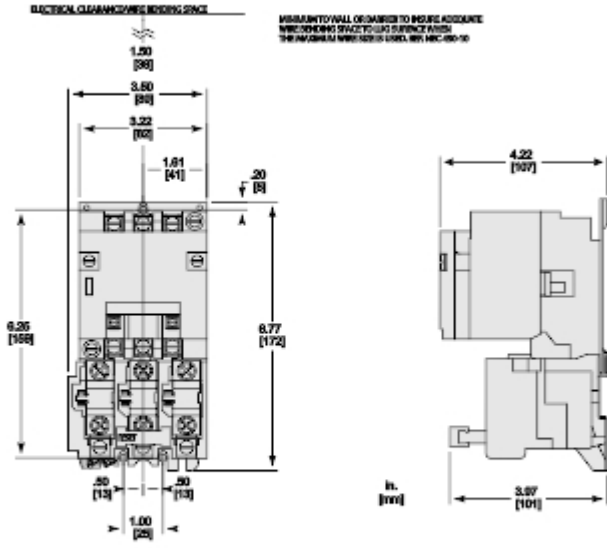
### Repack and remanufacture

Recyclability potential, in %	73
Circularity Profile	No need of specific recycling operations
Take-back	No
WEEE Label	The product must be disposed on European Union markets following specific waste collection and never end up in rubbish bins.



Technical Illustration

Dimensions



CLASS 8936 TYPE 9003\_  
ALL DIMENSIONS ARE APPROXIMATE.  
REFER TO TECHNICAL DRAWINGS AND DOCUMENTATION FOR COMPLETE INFORMATION.