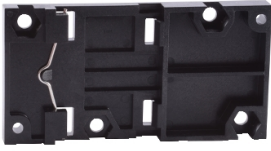


Product data sheet

Specifications

SQUARE D



Contactor, Definite Purpose, DIN rail mounting bracket, for 20A to 60A contactors

9999DMB1

Product availability: Stock - Normally stocked in distribution facility

Main

Product Range	DPA
Component type	DIN rail adaptor
Used with	contactor

Ordering and shipping details

Category	US1CP1B21762
Discount Schedule	CP1B
GTIN	785901080848
Returnability	Yes
Country of origin	CN

Packing Units

Unit Type of Package 1	PCE
Nbr. of units in pkg.	1
Package 1 Height	2.700 in (6.858 cm)
Package 1 Width	3.800 in (9.652 cm)
Package 1 Length	4.300 in (10.922 cm)
Package weight(Lbs)	4.000 oz (113.398 g)

Contractual warranty

Warranty (in months)	18
----------------------	----

Price is "List Price" and may be subject to a trade discount – check with your local distributor or retailer for actual price.



Environmental Data

Schneider Electric aims to achieve Net Zero status by 2050 through supply chain partnerships, lower impact materials, and circularity via our ongoing “Use Better, Use Longer, Use Again” campaign to extend product lifetimes and recyclability.

[Environmental Data explained >](#)

[How we assess product sustainability >](#)

Use Better



Materials and Substances

Packaging made with recycled cardboard	Yes
Packaging without single use plastic	Yes
SCIP Number	9635bca0-88f5-4211-aaa3-d012e1850a41
EU RoHS Directive	Compliant
REACH Regulation	Reference contains Substances of Very High Concern above the threshold

Use Longer



Lifetime extension

Repair	No
--------	----

Use Again



Repack and remanufacture

Take-back	No
-----------	----