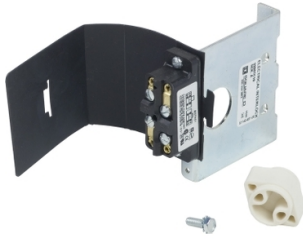


Product data sheet

Specifications

SQUARE D



Disconnect mechanism, flange mounted, disconnect switch auxiliary contact kit, 10A, 2 pole, DPDT

9999TC20

Product availability: Non-Stock - Not normally stocked in distribution facility

Main

Range	Square D
Product or Component Type	Interlock
Device Application	Control

Complementary

Range compatibility	Square D Disconnect Switch
[Ie] rated operational current	10 A 120 V AC 50/60 Hz 10 A 240 V AC 50/60 Hz 10 A 480 V AC 50/60 Hz 10 A 600 V AC 50/60 Hz

Ordering and shipping details

Category	US10CP121761
Discount Schedule	0CP1
GTIN	785901858485
Returnability	No
Country of origin	MX

Packing Units

Unit Type of Package 1	PCE
Nbr. of units in pkg.	1
Package 1 Height	3.100 in (7.874 cm)
Package 1 Width	4.200 in (10.668 cm)
Package 1 Length	6.700 in (17.018 cm)
Package weight(Lbs)	8.800 oz (249.476 g)

Contractual warranty

Warranty (in months)	18
----------------------	----

Price is "List Price" and may be subject to a trade discount – check with your local distributor or retailer for actual price.



Environmental Data

Schneider Electric aims to achieve Net Zero status by 2050 through supply chain partnerships, lower impact materials, and circularity via our ongoing “Use Better, Use Longer, Use Again” campaign to extend product lifetimes and recyclability.

[Environmental Data explained >](#)

[How we assess product sustainability >](#)

Use Better

Materials and Substances

Packaging made with recycled cardboard **No**

Packaging without single use plastic **No**

Use Longer

Lifetime extension

Repair **No**

Use Again

Repack and remanufacture

Take-back **No**

WEEE Label **The product must be disposed on European Union markets following specific waste collection and never end up in rubbish bins.**