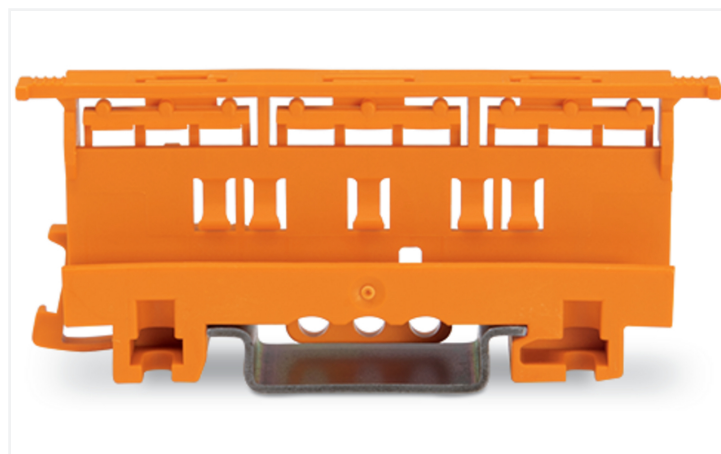
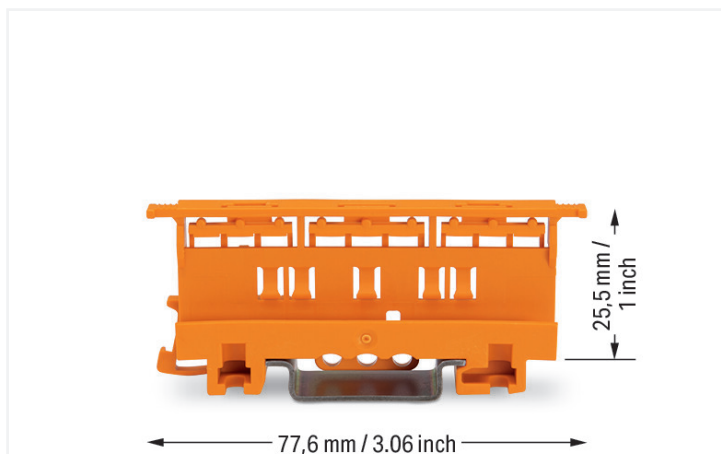


Data Sheet | Item Number: 221-500

Mounting carrier; 221 Series - 4 mm²; for DIN-35 rail mounting/screw mounting; orange

<https://www.wago.com/221-500>



Color: ■ orange

Physical data

Width	17.5 mm / 0.689 inches
Height	77.6 mm / 3.055 inches
Depth from upper-edge of DIN-rail	25.5 mm / 1.004 inches
Depth	32 mm / 1.26 inches

Mechanical data

Mounting type	DIN-35 rail Screw mount
Suitable	for 2-, 3- and 5-conductor 221 Series Splicing Connectors (4 mm ²)

Material data

Note (material data)	Information on material specifications can be found here
Color	orange
Material group	I
Insulation material (main housing)	Polyamide (PA66)
Flammability class per UL94	V0
Fire load	0.294 MJ
Weight	9.8 g

Commercial data

PU (SPU)	50 (10) pcs
Packaging type	Box
Country of origin	CN
GTIN	4055143421942
Customs tariff number	39269097900

Product Classification

UNSPSC	39121410
eCl@ss 10.0	27-14-11-92
eCl@ss 9.0	27-14-11-92
ETIM 9.0	EC002848
ETIM 10.0	EC002848
ECCN	NO US CLASSIFICATION

Environmental Product Compliance

RoHS Compliance Status	Compliant, No Exemption
------------------------	-------------------------

Downloads

Environmental Product Compliance

Compliance Search	
Environmental Product Compliance 221-500	↓

Documentation

Bid Text			
221-500	19.02.2019	xml 2.72 KB	↓
221-500	23.01.2019	docx 14.58 KB	↓
ausschreiben.de 221-500			↓

CAD/CAE-Data

CAD data		CAE data	
2D/3D Models 221-500	↓	EPLAN Data Portal 221-500	↓
		ZUKEN Portal 221-500	↓

1 Compatible Products

1.1 Optional Accessories

1.1.1 Marking

1.1.1.1 Marking strip



Item No.: 210-833

Marking strips; 25 m on roll; 6 mm wide; plain; Self-adhesive; white

1.1.2 Mounting adapter

1.1.2.1 Mounting accessories



Item No.: 222-510

Angled DIN-rail adapter; in combination with mounting carrier; 221-500 or 222-500; for DIN-35 rail mounting; gray



Item No.: 222-505

Strain relief plate; for mounting carrier; 221 or 222 Series, can be snapped

Installation Notes

Conductor termination



CAGE CLAMP® connection:

Conductor termination with connectors fitted in a mounting carrier



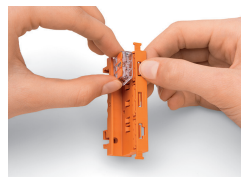
Removing a conductor.



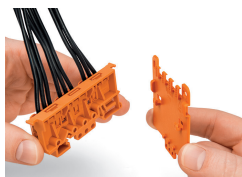
Inserting a connector into the mounting carrier.



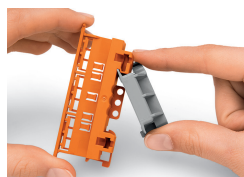
Inserting a connector into the mounting carrier.



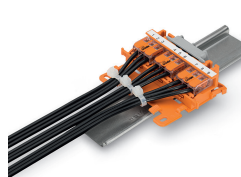
Removing a connector from the mounting carrier.



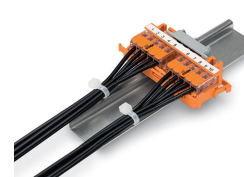
Securing a strain relief plate (222-505) to the mounting carrier.



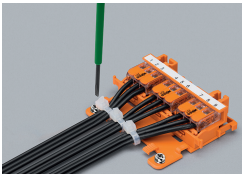
Snapping the angled DIN-rail adapter (222-510) onto the mounting carrier.



Horizontal mounting on DIN-35 rail using an angled DIN-rail adapter



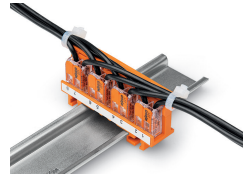
Horizontal mounting on DIN-35 rail using an angled DIN-rail adapter



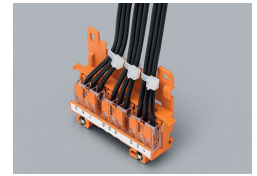
Horizontal screw mounting with strain relief plate on a flat surface



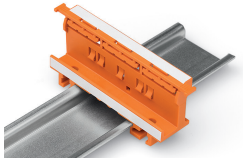
Vertical mounting with strain relief plate on DIN-35 rail



Strain relief via cable ties on the mounting carrier (transverse to the connectors' wiring direction) – clamping units labeled via marking strips (210-334)



Vertical screw mounting with strain relief plate on a flat surface



Mounting carrier on a DIN-35 rail

Testing



Testing connectors via test slots on top of the carrier.