

Bussmann series 22 x 58 mm FWP ferrule fuses



Product description

Eaton's Bussmann® series FWP ferrule fuse links are specifically designed for the protection of DC common bus, DC drives, power converters/rectifiers and reduced voltage starters. They are available with or without strikers.

Feature and benefits

- Excellent cycling capability and DC performance
- Low arc voltage and low energy let-through
- Low watts loss in a compact size
- Used with finger-safe holders/blocks

Typical applications

- DC common bus
- DC drives
- Power converters/rectifiers
- Reduced voltage starters

Catalogue symbol

- With striker: FWP-(amps)A22F
- Without striker: FWP-(amps)A22FI

Technical data

- Rated voltage:
 - Non striker version: 700 V a.c./V d.c.
 - Striker version: 700 V a.c./ 500 V d.c
- Rated current: 20 to 100 A
- Operating class; aR
- Breaking capacity:
 - 200 kA RMS Sym.
 - Non striker version: 50 kA at 700 V d.c., t/c 5ms
 - Striker version: 50 kA at 500 V d.c., t/c 5ms

Standards/Approvals

- CE
- UL Recognised
- CSA Component acceptance for versions without striker only

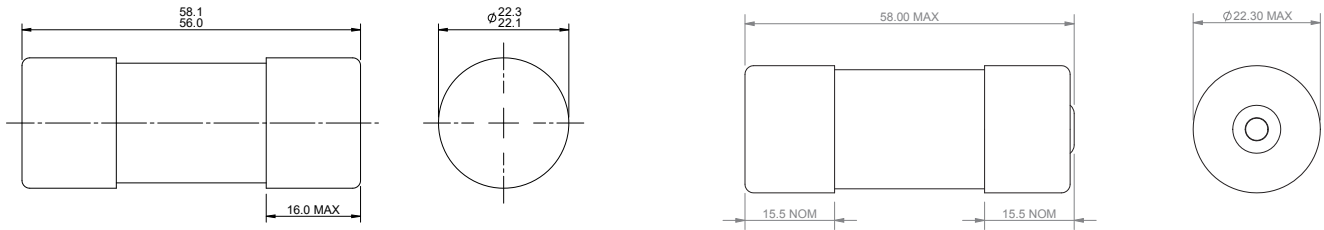
Packaging

- 10 in a pack

Technical data

Catalogue number	Fuse type	Rated voltage		Rated current (Amps)	Pre-arcing I ² t	Total I ² t @ 700 V a.c.	Power loss at I _n (W)
		V a.c.	V d.c.				
FWP-20A22F	Without striker	700	700	20	23	330	5
FWP-25A22F	Without striker	700	700	25	37	530	6
FWP-32A22F	Without striker	700	700	32	55	780	8
FWP-40A22F	Without striker	700	700	40	68	960	12
FWP-50A22F	Without striker	700	700	50	155	2200	12.5
FWP-63A22F	Without striker	700	700	63	280	4000	15
FWP-80A22F	Without striker	700	700	80	550	7800	15
FWP-100A2FF	Without striker	700	700	100	1100	15600	16.5
FWP-20A22FI	With striker	700	500	20	23	330	5
FWP-25A22FI	With striker	700	500	25	37	530	6
FWP-32A22FI	With striker	700	500	32	55	780	8
FWP-40A22FI	With striker	700	500	40	68	960	12
FWP-50A22FI	With striker	700	500	50	155	2200	12.5
FWP-63A22FI	With striker	700	500	63	280	4000	15
FWP-80A22FI	With striker	700	500	80	550	7800	15
FWP-100A2FFI	With striker	700	500	100	1100	15600	16.5

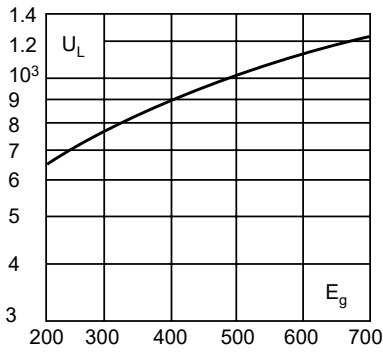
Dimensions - mm



Without striker

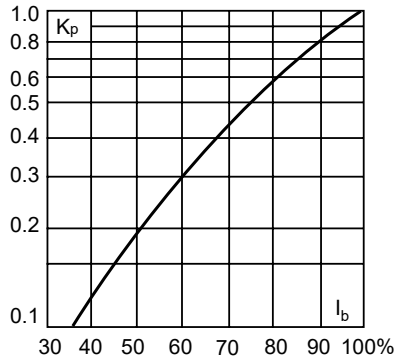
With striker

Arc voltage curve



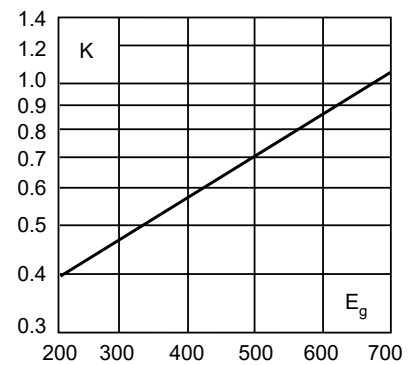
This curve gives the peak arc voltage, U_L , which may appear across the fuse during its operation as a function of the applied working voltage, E_g , (RMS) at a power factor of 15%.

Power losses curve



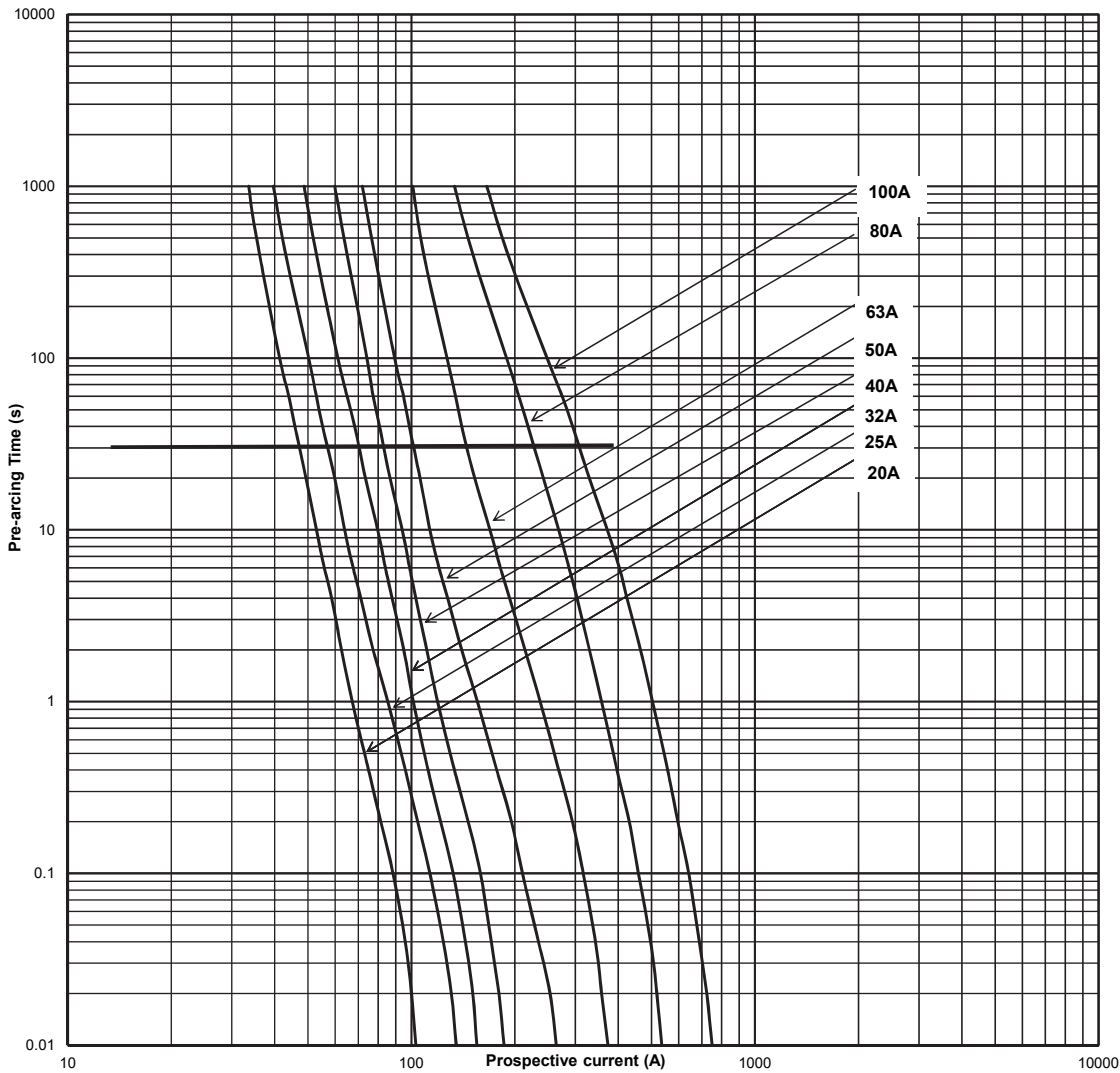
Watts loss at rated current is given in the electrical characteristics. The curve allows the calculation of the power losses at load currents lower than the rated current. The correction factor, K_p , is given as a function of the RMS load current, I_b , in % of the rated current.

Total clearing curve



The total clearing I^2t at rated voltage and at power factor of 15% are given in the electrical characteristics. For other voltages, the clearing I^2t is found by multiplying by correction factor, K , given as a function of applied working voltage, E_g , (RMS).

Time-current curve



The only controlled copy of this data sheet is the electronic read-only version located on the Eaton network drive. All other copies of this document are by definition uncontrolled. This bulletin is intended to clearly present comprehensive product data and provide technical information that will help the end user with design applications. Eaton reserves the right, without notice, to change design or construction of any products and to discontinue or limit distribution of any products. Eaton also reserves the right to change or update, without notice, any technical information contained in this bulletin. Once a product has been selected, it should be tested by the user in all possible applications.

Changes to the products, to the information contained in this document, and to prices are reserved; so are errors and omissions. Only order confirmations and technical documentation by Eaton is binding. Photos and pictures also do not warrant a specific layout or functionality. Their use in whatever form is subject to prior approval by Eaton. The same applies to Trademarks (especially Eaton, Moeller, and Cutler-Hammer). The Terms and Conditions of Eaton apply, as referenced on Eaton Internet pages and Eaton order confirmations.

Eaton
 EMEA Headquarters
 Route de la Longeraie 7
 1110 Morges, Switzerland

Electrical Sector
 Eaton Electrical Products Limited
 Unit 1, Hawker Business Park
 Melton Road, Burton-on-the-Wolds
 LE12 5TH, UK
 Eaton.com

© 2017 Eaton
 All Rights Reserved
 PDF Only
 Publication No. 720026
 February 2026