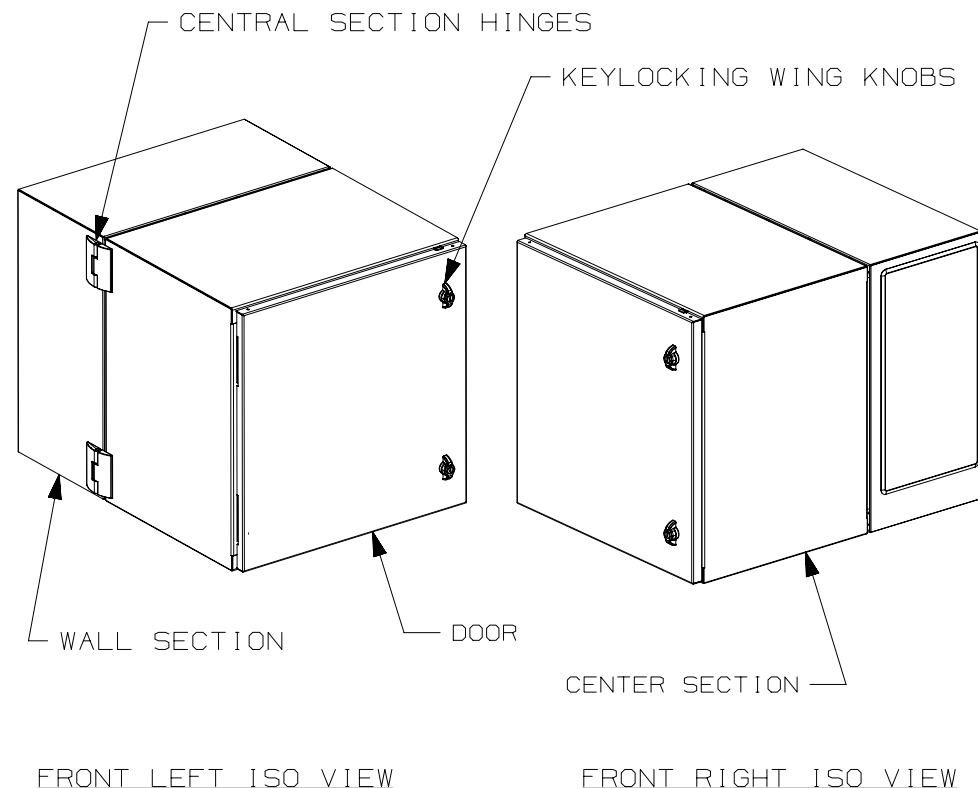


THIS COPY IS PROVIDED ON A RESTRICTED BASIS AND IS NOT TO BE USED IN ANY WAY DETRIMENTAL TO THE INTERESTS OF PANDUIT CORP.

NOTES:

1. VISIT OUR ON-LINE CATALOG AT WWW.PANDUIT.COM FOR A LIST OF CURRENT PARTS APPLICABLE FOR USE WITH THIS PRODUCT AND INSTRUCTION SHEET 1A-CD-0004.
2. DIMENSIONS IN PARENTHESES ARE METRIC [mm].
3. CAN BE USED WITH ANY 19" CEA STANDARD PANEL.
4. PARTS SUPPLIED:
 - 12RU DUAL HINGE NEMA 4/12 ENCLOSURE
 - KEYLOCKING WING KNOBS ARE INCLUDED PROVIDING ACCESS CONTROL TO THE ENCLOSURE.
 - (2) KEYS ARE INCLUDED WITH EACH ENCLOSURE.
 - ACCOMODATIONS FOR AN OPTIONAL AIR CONDITIONER.
 - INSTALLED FRONT AND REAR CAGE NUT RAILS IN OPTIMIZED POSITIONS FOR EQUIPMENT MOUNTING.
 - INSTALLED FIBER ENCLOSURE (96 FIBER CAPACITY)
 - INSTALLED (2) 48-PORT PATCH PANELS
 - INSTALLED CABLE MANAGEMENT
 - INSTALLED DOOR GROUND WHIPS, EQUIPMENT GROUND WHIPS (ONE END)
 - INSTALLED GROUND BAR
 - INFRASTRUCTURE GROUND CABLE
 - 10" LONG DIN RAIL MOUNTING PROVISION
 - CABLE/FIBER/POWER PENETRATION RECOMMENDATION TEMPLATE
 - INSTRUCTIONS FOR CABLE ROUTING AND MANAGEMENT
5. CENTER HINGED SECTION
MAXIMUM LOAD RATING: 250 LBS [113.4 kg].
6. MAXIMUM EQUIPMENT DEPTH: 22.69" (576mm).
IF NO THIRD CABLE TRUNK IS UTILIZED, 24.9" (632mm) IS AVAILABLE.

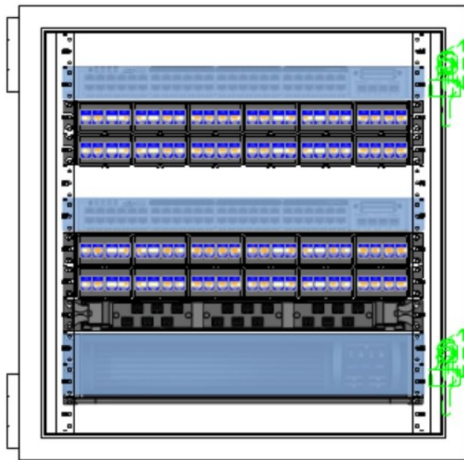


SHIPPING LENGTH	44" (1117.6 mm)
SHIPPING WIDTH	44" (1117.6 mm)
SHIPPING HEIGHT	35" (889 mm)
SHIPPING WEIGHT	184 lbs. (83.5 kg.)
ENCLOSURE WEIGHT	141 lbs. (64 kg.)

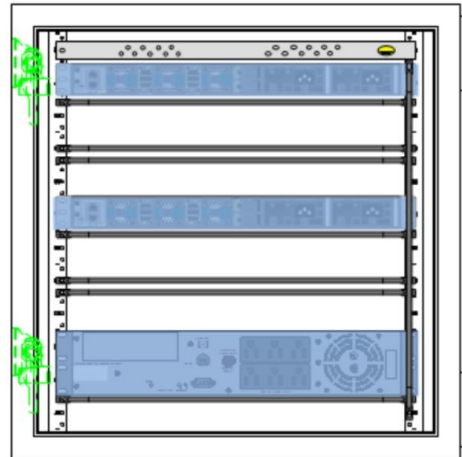
TITLE				
ZDF242430 PRECONFIGURED 24" INDUSTRIAL DISTRIBUTION FRAME				
CUSTOMER DRAWING				
ITEM REVISION NAME		00155LAA/02		
DATASET FILE NAME		00155LAA_DC-02A		
UNLESS OTHERWISE SPECIFIED, DIMENSIONAL TOLERANCES ARE: IN [mm]		PANDUIT MATERIAL: MATERIAL: DOOR: 16 GA. STEEL CENTER AND WALL SECTION: 14 GA. STEEL FINISH: RAL 7035 LIGHT-GRAY, LOW-GLOSS, LIGHTLY TEXTURED POLYESTER POWDER PAINT DRAWING NUMBER: 00155LAA_DC		
.x ± .1 [2.54] .xxx ± .015 [0.38]				
.xx ± .03 [0.76] ANGLES ± 5 °				
THIRD ANGLE PROJECTION				
DRAWN BY	DATE	CHK	SCALE	
JBO	02/02/17	DAJP	NONE	
SHT 1 OF 4				SIZE A

REV	DATE	BY	CHK	APR	DESCRIPTION	ECN
02A	3/21/25	JKU/JBO	DAJP	LF	FIBER ENCLOSURE UPDATE	011906
01A	02/02/17	JBO	DAJP	SVASH	RELEASED	00155LAA

THIS COPY IS PROVIDED ON A RESTRICTED BASIS AND IS NOT TO BE USED IN ANY WAY DETRIMENTAL TO THE INTERESTS OF PANDUIT CORP.

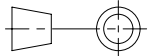


Front View



Rear View

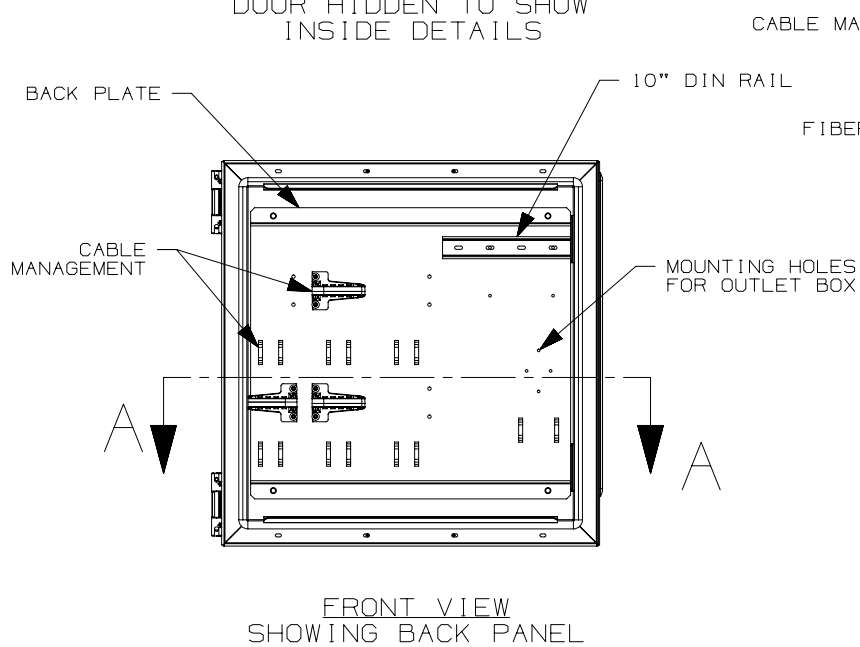
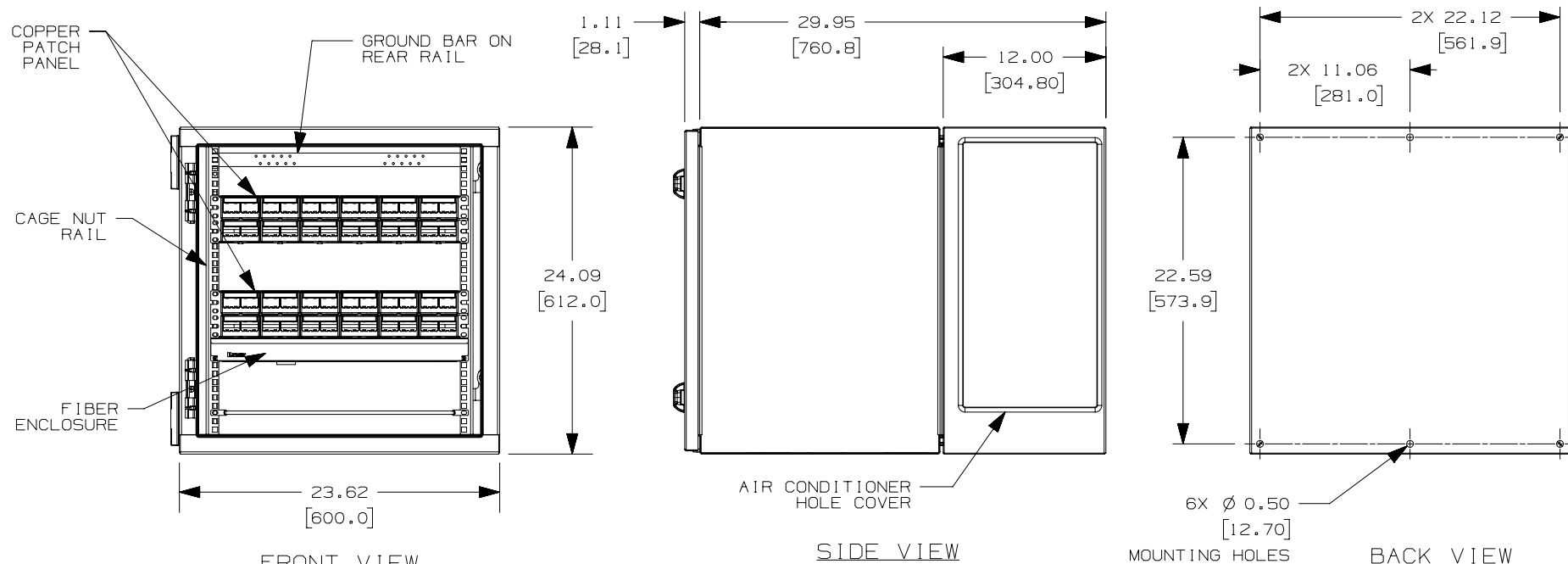
- RU 12 PANDUIT RGRB19CN GROUND BAR
RU 11 CUSTOMER SWITCH- "B"
RU 9-10 PANDUIT CPPL48WBLY 48 PORT PATCH PANEL
- RU 8 OPEN
RU 7 CUSTOMER SWITCH - "A"
RU 5-6 PANDUIT CPPL48WBLY 48 PORT PATCH PANEL
- RU 4 PANDUIT FRE1UBL
RU 2-3 CUSTOMER UPS
- RU 1 OPEN

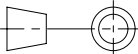
TITLE		ZDF242430 PRECONFIGURED 24" INDUSTRIAL DISTRIBUTION FRAME	
ITEM REVISION NAME		CUSTOMER DRAWING	
00155LAA/02		PANDUIT	
DATASET FILE NAME			
00155LAA_DC-02A		MATERIAL:	
UNLESS OTHERWISE SPECIFIED, DIMENSIONAL TOLERANCES ARE: IN [mm]		SEE SHEET 1 NOTES	
.x ± .1 [2.54] .xxx ± .015 [0.38]		DRAWING NUMBER:	
.xx ± .03 [0.76] ANGLES ± 5 °		00155LAA_DC	
		THIRD ANGLE PROJECTION	
DRAWN BY	DATE	CHK	SCALE
JB0	02/02/17	DAJP	NONE
REV		SHT 2 OF 4	
DATE		A	
BY			
CHK			
APR			
DESCRIPTION		ECN	

2

1

THIS COPY IS PROVIDED ON A RESTRICTED BASIS AND IS NOT TO BE USED IN ANY WAY DETRIMENTAL TO THE INTERESTS OF PANDUIT CORP.



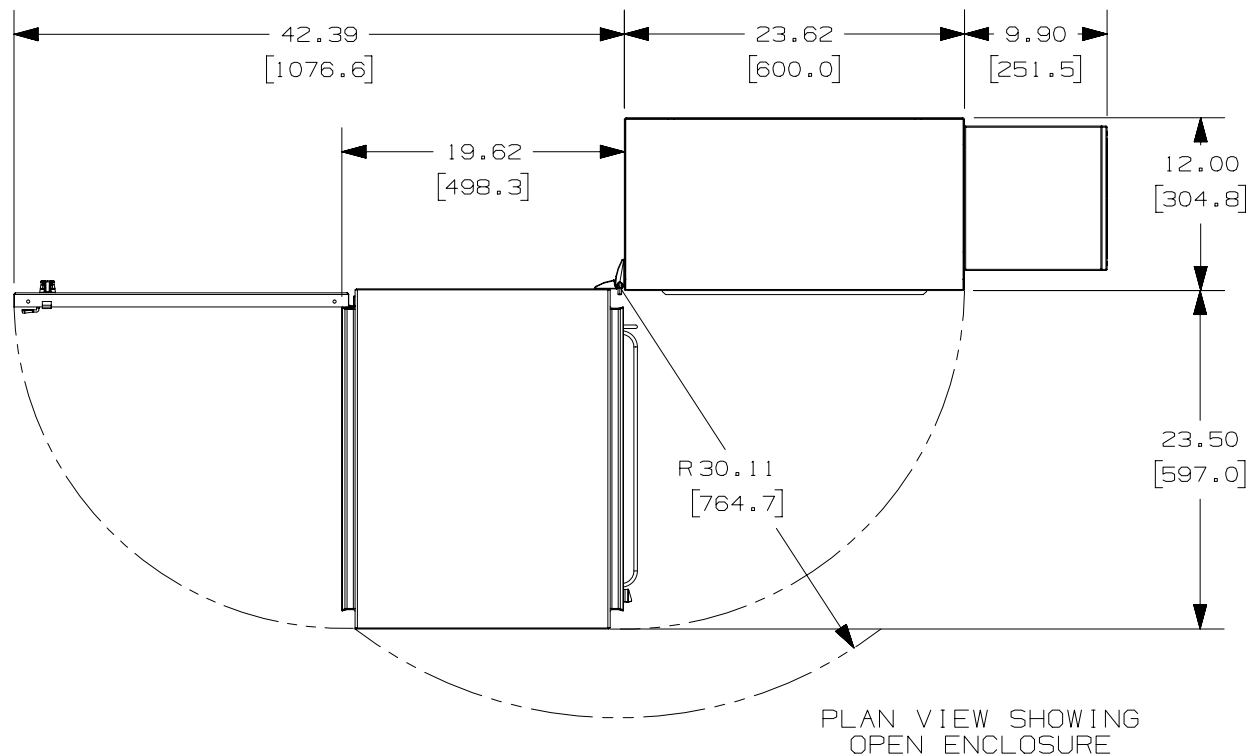
TITLE				
ZDF242430 PRECONFIGURED 24" INDUSTRIAL DISTRIBUTION FRAME				
CUSTOMER DRAWING				
ITEM REVISION NAME			<div>PANDUIT</div>	
00155LAA/02				
DATASET FILE NAME			MATERIAL:	
00155LAA_DC-02A				
UNLESS OTHERWISE SPECIFIED, DIMENSIONAL TOLERANCES ARE: IN [mm]			SEE SHEET 1 NOTES	
.x ± .1 [2.54] .xxx ± .015 [0.38]				
.xx ± .03 [0.76] ANGLES ± 5 °			DRAWING NUMBER:	
<div></div> THIRD ANGLE PROJECTION				
DRAWN BY		DATE	CHK	SCALE
JBO		02/02/17	DAJP	NONE
SHT 3 OF 4				SIZE
				A

REV	DATE	BY	CHK	APR	DESCRIPTION	ECN
--	--	--	--	--	SEE SHEET 1 FOR REVISION CONTROL	--

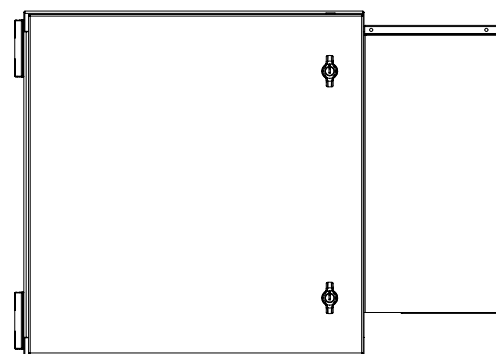
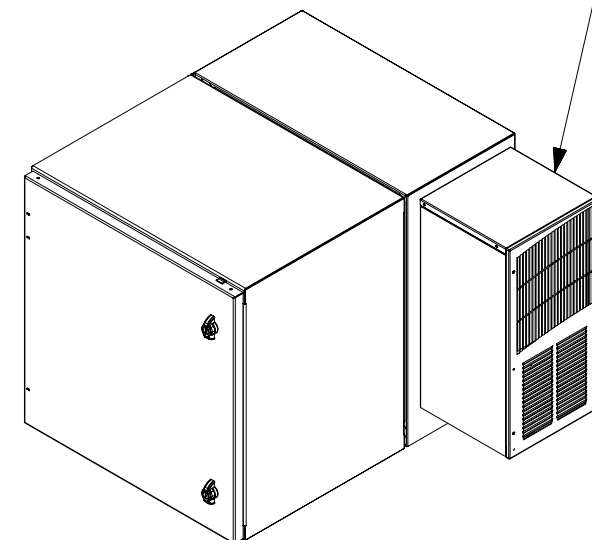
2

1

THIS COPY IS PROVIDED ON A RESTRICTED BASIS AND IS NOT TO BE USED IN ANY WAY DETRIMENTAL TO THE INTERESTS OF PANDUIT CORP.



OPTIONAL HOFFMAN
T20 MODEL AIR CONDITIONER



TITLE		ZDF242430 PRECONFIGURED 24" INDUSTRIAL DISTRIBUTION FRAME	
ITEM REVISION NAME		00155LAA/02	
DATASET FILE NAME		00155LAA_DC-02A	
UNLESS OTHERWISE SPECIFIED, DIMENSIONAL TOLERANCES ARE: IN [mm]		MATERIAL:	
.x ± .1 [2.54] .xxx ± .015 [0.38] .xx ± .03 [0.76] ANGLES ± 5 °		SEE SHEET 1 NOTES	
THIRD ANGLE PROJECTION		DRAWING NUMBER:	
DRAWN BY JBO		02/02/17	
CHK DAJP		SCALE NONE	
SHT 4 OF 4		A	