



MasterClass MainsFit (UL Type-B) T8

14.5T8/MAS/48-850/MF21/P/DIM 25/1

MasterClass, LED, T8, 14.5 W, 5000 K, 2100 lm, 70000 hour(s)

The MasterClass MainsFit (UL Type B) T8 lamps are designed to be the perfect retrofit solution to move from traditional fluorescent lamps to energy saving LEDs. This ballast bypass lamp has everything needed built into the lamp with proven energy savings, long life (70k hours), surge suppression and industry leading safety features. All lamps in the MasterClass MainsFit family are double-ended to help simplify the installation. In addition, all lamps meet the Philips standards for light quality so that end users will be in a comfortable environment regardless of the MasterClass MainsFit lamp type.

Product data

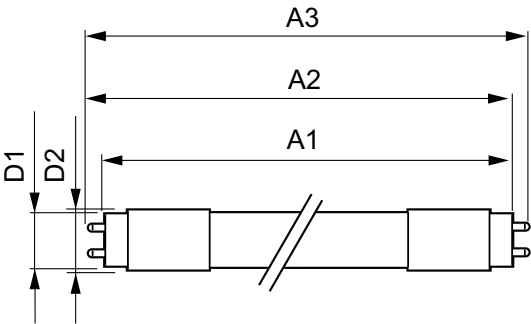
| General Information | | Color rendering index (CRI) | |
|------------------------------------|---------------------------------|--|-------------|
| Cap-Base | G13 [Medium Bi-Pin Fluorescent] | 80 | |
| Nominal lifetime | 70,000 hour(s) | LLMF At End Of Nominal Lifetime (Nom) 70 % | |
| Switching Cycle | 50,000 | | |
| Lighting Technology | LED | | |
| Light Technical | | Operating and Electrical | |
| Color Code | 850 [CCT of 5000K] | Line Frequency | 50 to 60 Hz |
| Beam Angle (Nom) | 180 degree(s) | Input Frequency | 50 to 60 Hz |
| Luminous Flux | 2,100 lm | Power Consumption | 14.5 W |
| Color Designation | Daylight | Lamp Current (Max) | 125 mA |
| Correlated Color Temperature (Nom) | 5000 K | Lamp Current (Min) | 58 mA |
| Luminous Efficacy (rated) (Nom) | 144.00 lm/W | Wattage Equivalent | 32 W |
| Color Consistency | <5 | Starting Time (Nom) | 0.5 s |
| | | Warm-up time to 60% light | 0.5 s |
| | | Power Factor (Fraction) | 0.9 |
| | | Voltage (Nom) | 120-277 V |

MasterClass MainsFit (UL Type-B) T8

| | |
|--------------------------|---|
| UL Type | UL Type B |
| Temperature | |
| T-Case Maximum (Nom) | 70 °C |
| Controls and Dimming | |
| Dimmable | Only with specific dimmers |
| Mechanical and Housing | |
| Bulb Finish | Frosted |
| Bulb Material | Plastic |
| Product Length | 1,200 mm |
| Bulb Shape | T8 |
| Net Weight (Piece) | 0.210 kg |
| Approval and Application | |
| Energy Saving Product | Yes |
| Approval Marks | RoHS compliance UL certificate DLC compliance |

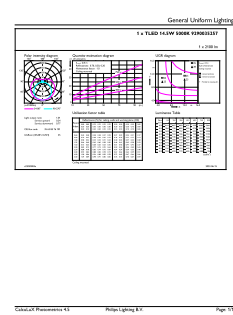
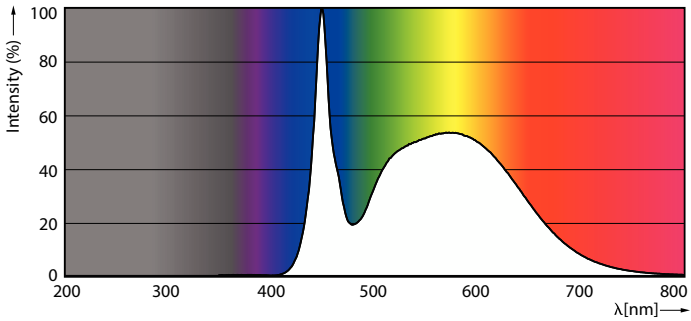
| | |
|-------------------------------------|-----------------------------------|
| EU RoHS compliant | Yes |
| Ambient temperature range | -20 °C to 45 °C |
| Application Conditions | |
| can it be used in closed luminaires | Yes |
| Product Data | |
| Order product name | 14.5T8/MAS/48-850/MF21/P/DIM 25/1 |
| Full product name | 14.5T8/MAS/48-850/MF21/P/DIM 25/1 |
| Order code | 929003525704 |
| Material Nr. (12NC) | 929003525704 |
| Numerator - Quantity Per Pack | 1 |
| EAN/UPC - Product/Case | 046677579500 |
| Numerator - Packs per outer box | 25 |
| EAN/UPC - Case | 50046677579505 |

Dimensional drawing



| Product | D1 | D2 | A1 | A2 | A3 |
|---------------------------------------|---------|-------|------------|------------|------------|
| 14.5T8/MAS/48-850/ MF21/P/DIM 25/1 | 25.7 mm | 28 mm | 1,198.2 mm | 1,205.3 mm | 1,212.4 mm |

Photometric data

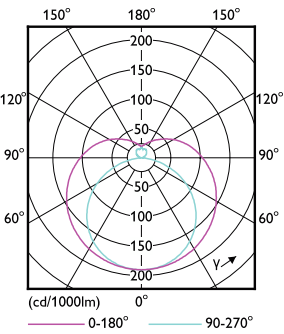


Spectral Power Distribution Colour - 14.5T8/MAS/48-850/MF21/P/DIM 25/1

General uniform lighting - 14.5T8/MAS/48-850/MF21/P/DIM 25/1

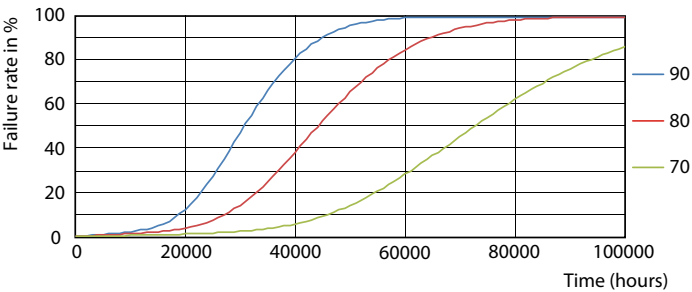
MasterClass MainsFit (UL Type-B) T8

Photometric data

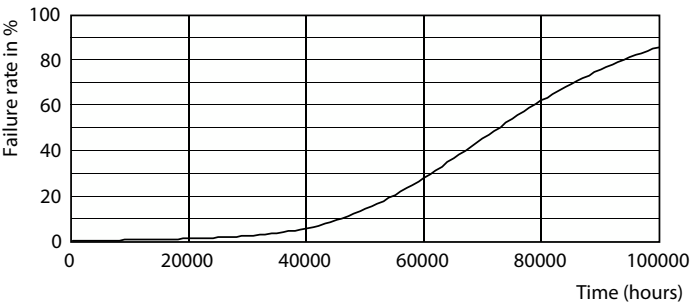


Light Distribution Diagram - 14.5T8/MAS/48-850/MF21/P/DIM 25/1

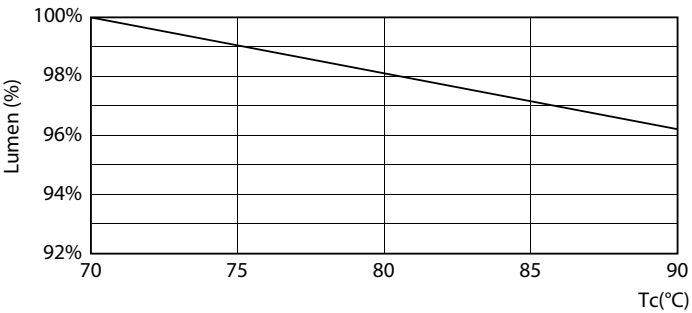
Lifetime



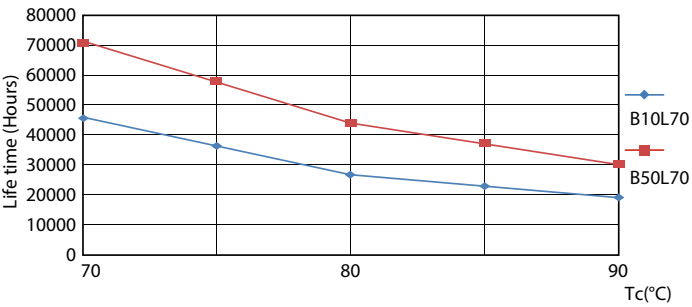
FailureRate



Life Expectancy Diagram



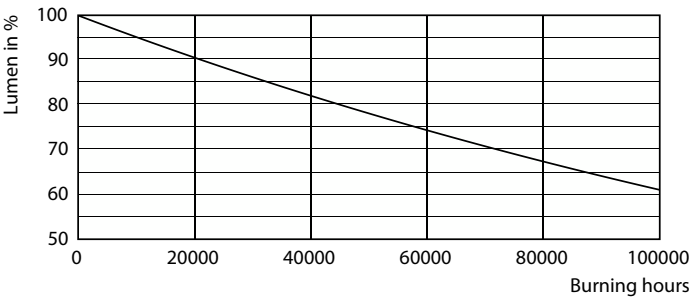
Lumen Maintenance Diagram - 14.5T8/MAS/48-850/MF21/P/DIM 25/1



LifetimeVsTc

MasterClass MainsFit (UL Type-B) T8

Lifetime



Lumen Maintenance Diagram - 14.5T8/MAS/48-850/MF21/P/DIM 25/1

