

# CorePro MainsFit (UL Type-B) T8

14.5T8/COR/48-840/MF21/G/DIM 25/1

CorePro, LED, T8, 14.5 W, 4000 K, 2100 lm, 50000 hour(s)

The CorePro MainsFit (UL Type B) lamps are designed to be the perfect retrofit solution to move from traditional fluorescent lamps to energy saving LEDs. This ballast bypass lamp has everything needed built into the lamp with proven energy savings, long life (up to 50k hours), surge suppression and industry leading safety features. All lamps in the CorePro MainsFit family are double-ended to help simplify the installation. In addition, all lamps meet the Philips standards for light quality so that end users will be in a comfortable environment regardless of the CorePro MainsFit lamp type.

## Product data

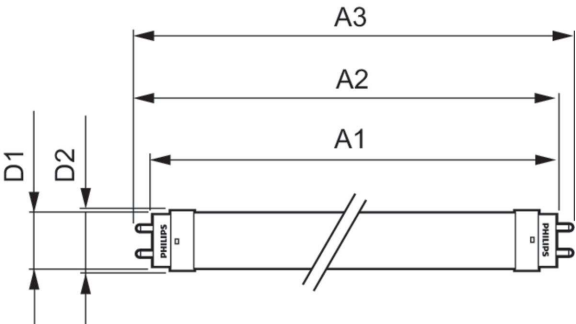
General Information		Color rendering index (CRI)	
Cap-Base	G13 [Medium Bi-Pin Fluorescent]	80	
Nominal lifetime	50,000 hour(s)	LLMF At End Of Nominal Lifetime (Nom) 70 %	
Switching Cycle	50,000		
Lighting Technology	LED		
Light Technical		Operating and Electrical	
Color Code	840 [CCT of 4000K]	Line Frequency	50 to 60 Hz
Beam Angle (Nom)	240 degree(s)	Input Frequency	50 to 60 Hz
Luminous Flux	2,100 lm	Power Consumption	14.5 W
Color Designation	Cool White (CW)	Lamp Current (Max)	125 mA
Correlated Color Temperature (Nom)	4000 K	Lamp Current (Min)	58 mA
Luminous Efficacy (rated) (Nom)	144.00 lm/W	Wattage Equivalent	32 W
Color Consistency	6SCDM	Starting Time (Nom)	0.5 s
		Warm-up time to 60% light	0.5 s
		Power Factor (Fraction)	0.9
		Voltage (Nom)	120-277 V

CorePro MainsFit (UL Type-B) T8

UL Type	UL Type B
Temperature	
T-Case Maximum (Nom)	70 °C
Controls and Dimming	
Dimmable	Only with specific dimmers
Mechanical and Housing	
Bulb Finish	Frosted
Bulb Material	Glass
Product Length	1,200 mm
Bulb Shape	T8
Net Weight (Piece)	0.200 kg
Approval and Application	
Energy Saving Product	Yes
Approval Marks	RoHS compliance UL certificate DLC compliance

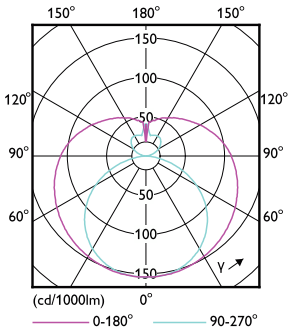
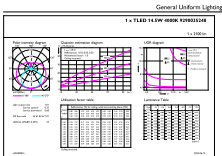
EU RoHS compliant	Yes
Ambient temperature range	-20 °C to 45 °C
Application Conditions	
can it be used in closed luminaires	Yes
Product Data	
Order product name	14.5T8/COR/48-840/MF21/G/DIM 25/1
Full product name	14.5T8/COR/48-840/MF21/G/DIM 25/1
Order code	929003524804
Material Nr. (12NC)	929003524804
Numerator - Quantity Per Pack	1
EAN/UPC - Product/Case	046677579425
Numerator - Packs per outer box	25
EAN/UPC - Case	50046677579420

Dimensional drawing



Product	D1	D2	A1	A2	A3
14.5T8/COR/48-840/ MF21/G/DIM 25/1	25.7 mm	28 mm	1,198.2 mm	1,205.3 mm	1,212.4 mm

Photometric data

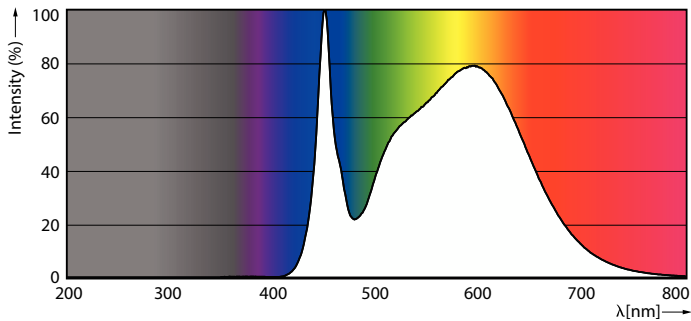


General uniform lighting - 14.5T8/COR/48-840/MF21/G/DIM 25/1

Light Distribution Diagram - 14.5T8/COR/48-840/MF21/G/DIM 25/1

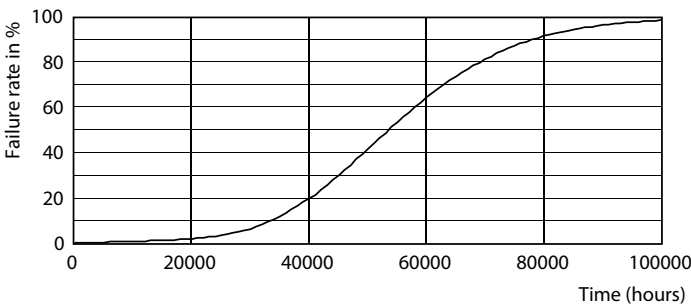
CorePro MainsFit (UL Type-B) T8

Photometric data

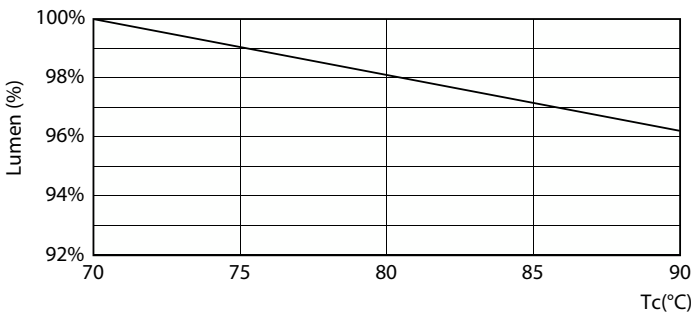


Spectral Power Distribution Colour - 14.5T8/COR/48-840/MF21/G/DIM 25/1

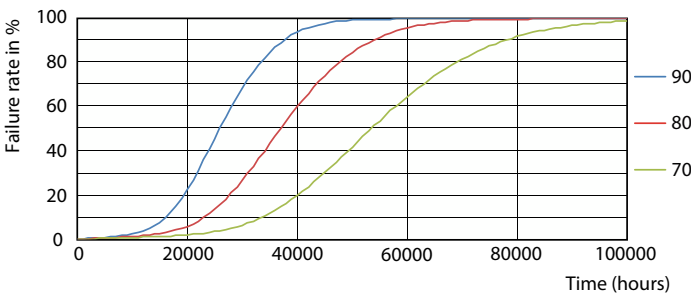
Lifetime



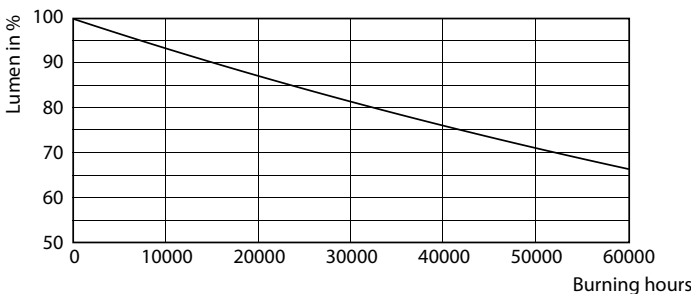
Life Expectancy Diagram



Lumen Maintenance Diagram - 14.5T8/COR/48-840/MF21/G/DIM 25/1



LEDtube 50K 7090 FailureRate-LED



Lumen Maintenance Diagram - 14.5T8/COR/48-840/MF21/G/DIM 25/1

CorePro MainsFit (UL Type-B) T8

Lifetime



LifetimeVsTc

