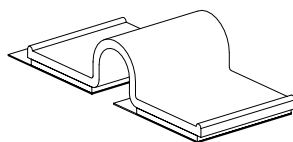
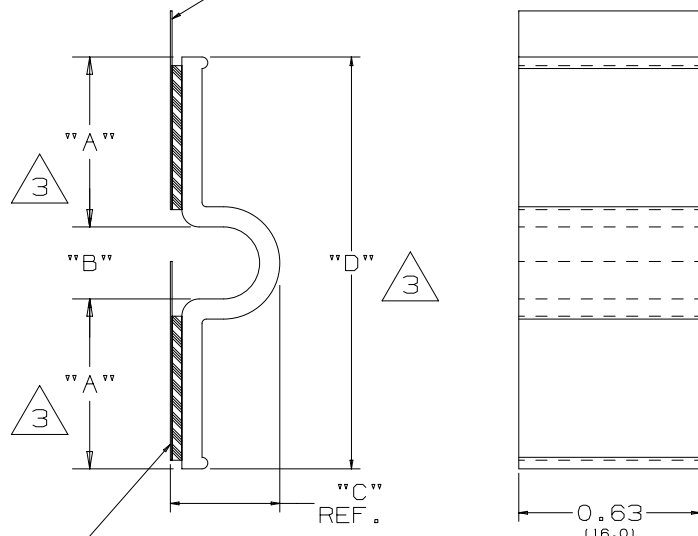


THIS COPY IS PROVIDED ON A RESTRICTED BASIS AND IS NOT TO BE USED IN ANY WAY DETRIMENTAL TO THE INTERESTS OF PANDUIT CORP.



A2C25-A
ACTUAL SIZE

-TEAR-TAB, TYP.



ADHESIVE TAPE--PRESSURE SENSITIVE FOAM .040 (1.02) THICK
WITH RUBBER ADHESIVE AND PROTECTIVE LINER, TWO PLACES.
** MOUNT IS DESIGNED TO SUPPORT LISTED MAXIMUM STATIC
LOAD ON A CLEAN, DRY, SMOOTH, GREASE-FREE SURFACE.

PANDUIT PART NUMBER *	NOMINAL CABLE O.D. in. / (mm)	"A" in. (mm)	"B" in. (mm)	"C" in. (mm)	"D" in. (mm)	STATIC LOAD ** lbs. / (g)	WEIGHT lbs. / (g) 100 pcs.
A2C12-A	0.120 (3.0)	0.59 (15.0)	0.12 (3.0)	0.23 (5.8)	1.30 (33.0)	0.37 (168.6g)	0.28 (127)
A2C25-A	0.250 (6.4)	0.59 (15.0)	0.25 (6.4)	0.36 (9.1)	1.43 (36.3)	0.37 (168.6g)	0.29 (132)
A2C38-A	0.375 (9.5)	0.59 (15.0)	0.38 (9.5)	0.49 (12.4)	1.56 (39.6)	0.37 (168.6g)	0.34 (154)
A2C50-A	0.500 (12.7)	0.59 (15.0)	0.50 (12.7)	0.61 (15.5)	1.72 (43.7)	0.37 (168.6g)	0.39 (177)

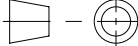
NO WARRANTY, EXPRESSED OR IMPLIED, IS MADE BY PANDUIT WITH RESPECT TO ADHESIVE BOND PERFORMANCE. AMONG OTHER THINGS, THE CONDITIONS UNDER WHICH THESE MOUNTS MAY BE APPLIED AND/OR THE SURFACE TO WHICH THEY MAY BE APPLIED ARE BEYOND PANDUIT'S CONTROL.

TO APPLY MOUNT

- 1) REMOVE PROTECTIVE LINER.
- 2) PLACE IN DESIRED LOCATION.
- 3) APPLY PRESSURE TO MOUNT.

NOTES:

- *1. SEE CURRENT PRICE SHEET FOR PART NUMBER SUFFIX DESIGNATION FOR PACKAGE SIZE.

							TITLE <div>A2C-A ADHESIVE CLIPS CUSTOMER DRAWING</div>					
							ITEM REVISION NAME G03597DB/01		<div>PANDUIT</div> <div>MATERIAL: GRAY PVC</div> <div>DRAWING NUMBER: GI0432BB</div>			
							DATASET FILE NAME G03597DB_DC-GB0432BB_03/01B					
							UNLESS OTHERWISE SPECIFIED, DIMENSIONAL TOLERANCES ARE: IN [mm] .x ± .1 [2.54] .xxx ± .020 [.5] .xx ± .05 [1.3] ANGLES ± 5 °					
							<div> - THIRD ANGLE PROJECTION</div>					
3	12/4/15	RVU	CLW	JHAC	ADD IN NEW COLUMN "A" TO SHOW .059" FOR ALL PART NUMBERS AND MOVE OLD "A" COLUMN TO NEW COLUMN "D". UPDATE DIM., LENGTH FROM "A" TO "D". CHANGE DIM., .059" (15.0) TO "A".	GAECN03269	GI0432BB					
2	5/10/02	SJSU			CHG STATIC LOAD. WAS .29(132).		GI0432BB					
1	6/15/01	SJSU			ADDED "REF" TO DIM.		GI0432BB					
R	12/2/96	SJSU			INITIAL RELEASE. REPLACED CUSTOMER DRAWING NO. 34025-10.		GI0432BB					
REV	DATE	BY	CHK	APR	DESCRIPTION	ECN	DRAWN BY RJKO	DATE 12/2/96	CHK JHAC	SCALE NTS	SHT 1 OF 1	SIZE A