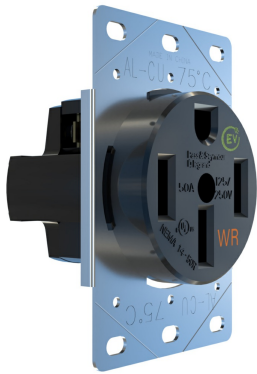




Pass and Seymour  
50A Weather-Resistant Electrical Outlet for EV Chargers  
Part No. 3894WREV



Rated for 50A and 125/250V, this single electrical outlet is perfect for use with Electrical Vehicle (EV) chargers in indoor and outdoor applications. Built for use with up-to Level 2 plug-in EV chargers, this outlet is capable of withstanding high temperatures to support safe, long-lasting EV charging at home. Features weather-resistance for code compliance and additional safety. Offering easy installation, this EV outlet provides homeowners with the perfect opportunity to use a plug-in charger.

## Features & Benefits

Built specifically for use with plug-in EV chargers in residential spaces to optimize charging for safety and efficiency

Capable of withstanding high temperatures associated with EV charging created by ambient conditions and current draw compared with products made from PVC

Weather-resistant for outdoor use providing power access to EV chargers; NEMA compliant

Manufactured with high-quality materials for lasting durability and reliable use

Installs easily as a straight-blade, 3-pole, 4-wire receptacle for secure EV charging

With its robust design and performance, the 50A Weather Resistant Heavy-Duty Flush Mount Receptacle can sustain the necessary extended charge time and high frequency of insertions EV chargers require.

## Specifications

### General Info

Product Line	Pass & Seymour	Color	Black
Finish	Satin	UPC Number	785007454697
Country Of Origin	China	Number of Receptacles	1
Features	Weatherproof	Outlet Type	Weather-Resistant
Application Sector	Commercial	Wall Plate Included	No
Standard	UL, CSA, RoHS, cULus	Warranty Type	1-Year Limited Warranty

### Dimensions

Product Width US	2.55 in	Product Weight US	0.34 lb
Product Height US	3.77 in	Product Length US	2.2 in

Listing Agencies / 3rd Party Agencies

ETL Listed	Yes
------------	-----

Additional Information

RoHS Compliant	Yes
----------------	-----

Technical Information

Connection Location	Side Only	Number of Wires	4
Amperage	50 A	Number of Poles	3 Pole
Wire Size	#10 - #6 AWG	Indoor/Outdoor	Both
NEMA Configuration Code	NEMA 14-50	Wire Connection Type	Screw Terminals
Voltage	125/250 V		