



JUNO HD COMMERCIAL TRAC

120V, 2-Circuit/2-Neutral Track System

TRACK SECTIONS, JOINERS, FEEDS, ACCESSORIES & FIXTURES

TEK Series

Project: _____

Fixture Type: _____

Location: _____

Contact/Phone: _____

PRODUCT DESCRIPTION

Juno HD Commercial 2-Circuit/2-Neutral Trac is ideal for dimming intensive applications. The independent neutrals guarantee that the two circuits are completely isolated. The potential for cross-circuit interference and neutral harmonics is completely eliminated to ensure trouble-free dimming. The HD Commercial 2-Circuit/2-Neutral Trac's extruded aluminum construction and continuously crimped conductors ensure mechanical strength and electrical reliability. Its integral suspension rail and predrilled mounting holes simplify installation. A wide variety of Juno track fixtures may be specified for use with the HD Commercial Trac system.

PRODUCT SPECIFICATIONS

Construction Rugged, heavy gauge extruded aluminum channel • Firmly crimped insulation and conductors for superior mechanical strength and electrical reliability • Integral mounting channel simplifies installation • Integral polarity ridge ensures proper connector and fixture installation • Fixtures supported by aluminum track extrusion to provide maximum weight bearing capacity and to ensure reliable contact with electrical conductors • Available in white or black painted finishes.

Electrical Two circuit operation with independent neutrals • Each circuit is rated for 20 Amp, 120 Volt operation • Track extrusion serves as 100% capacity ground • May be powered using a number of standard electrical feeds, or current limiting end feeds if necessitated by local codes.

Fixture Adapter System specific and assembled to track fixture • Integrally polarized construction to prevent reverse installation – only allows insertion in proper orientation • Rotary circuit selector enables simple switching between circuits • Integral on/off switch enables individual fixtures to be switched for servicing • See compatible track fixture selection on page 2 – contact factory for additional fixture choices.

Labels UL Listed • cUL Listed • Current Limiting Feeds approved by the California Energy Commission to meet requirements of Title 24 • Current Limiting Feeds comply with ASHRAE 90.1 and IECC Section 805.5.1.4 for track current limiting.

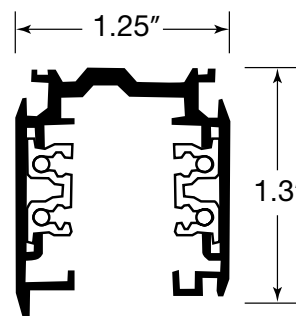
WARRANTY - 1-year limited warranty. This is the only warranty provided and no other statements in this specification sheet create any warranty of any kind. All other express and implied warranties are disclaimed. Complete warranty terms located at: www.acuitybrands.com/support/warranty/terms-and-conditions

Note: Actual performance may differ as a result of end-user environment and application.

Specifications subject to change without notice.



DIMENSIONS



PRODUCT INSTALLATION

Installation May be installed in linear or grid configurations (see examples on page 2) • Track sections can be cut in the field • Conductors of field cut track sections must be bent using XTSV12 Bending Tool to ensure proper electrical connections.

Mounting May be mounted directly to hard ceiling using suitable anchors (supplied by others) at pre-drilled mounting holes or using SKB10 Mounting Clip and integral suspension rail • May be mounted to 15/16" T-bar ceiling using appropriate SKBT12 or SKBX12 Mounting Clips and integral suspension rail • Can also be suspended from ceilings using SPUS Pendant Stem Kits, SKB34 Cable Suspension Kits or 1/4"-20 threaded rod (by others) • Mounting points should be spaced no further than 4' apart and within 6" of any track feed point, junction or end point.

JUNO HD COMMERCIAL TRAC

120V, 2-Circuit/2-Neutral Track System

TRACK SECTIONS, JOINERS, FEEDS, ACCESSORIES & FIXTURES

TEK Series

TRACK SECTIONS

PRODUCT CODES

| Catalog Number | Description | Finish | Actual Length |
|---------------------|-------------------|--------|---------------|
| TEK4 4FT BL | 4' Track Section | Black | 48" |
| TEK4 4FT WH | 4' Track Section | White | 48" |
| TEK4 8FT BL | 8' Track Section | Black | 96" |
| TEK4 8FT WH | 8' Track Section | White | 96" |
| TEK4 12FT BL | 12' Track Section | Black | 144" |
| TEK4 12FT WH | 12' Track Section | White | 144" |

HD Commercial Trac Compatible Fixtures

A variety of Juno track fixture designs can be adapted to operate with the Juno HD Commercial Trac system. Each fixture has a factory-assembled 2-circuit track adapter that is uniquely keyed to the 120V HD Commercial Trac system. **To order, select alternate TEK Adapter.**

Compatible fixture families include (consult factory for additional choices):

TEK Compatible:

R610L, R612L Integral Driver LED Cylinders

R620L Adjustable Beam LED Cylinder

T254L, T255L LED Cylindra

T256L, T257L, T258L, T259L, T260L LED Flood/Wall Washers

T261L, T262L, T263L, T265L, T267L LED Conix II Series

T271L, T272L LED Arc Series

T283L, T285L, T286L LED Cylinders with Integral Driver

T292 Studio II Series

T381L, T382L, T383L, T385L, T387L, T388L LED Vertical Cylinder Series

T690 Open Back Gimbals (Front Loading)

T1020, T1030, T1031S, T1038 Die Cast Gimbals

Ordering Examples: "T261L G3 30K 80CRI PDIM SP BL" becomes "T261L TEK G3 30K 80CRI PDIM SP BL"

and "T1030 E26 75W WH" becomes "T1030 TEK E26 75W WH"

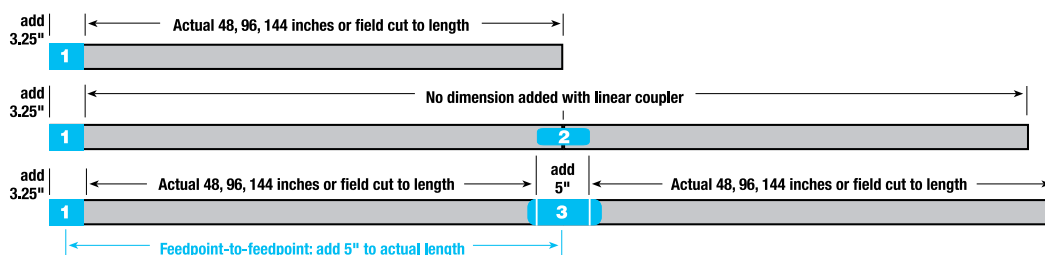
JUNO HD COMMERCIAL TRAC

120V, 2-Circuit/2-Neutral Track System

TRACK SECTIONS, JOINERS, FEEDS, ACCESSORIES & FIXTURES

TEK Series

POSSIBLE TRACK CONFIGURATION & RECOMMENDED COMPONENTS



1. **TEK11** End Feed (left) - standard
TEK12 End Feed (right) - reverse polarity
(used for conduit feed also)

2. **TEK21** Miniature Straight Connector

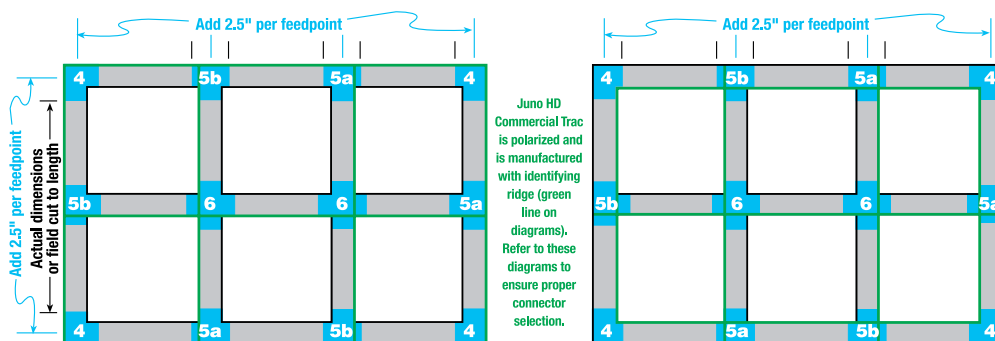
3. **TEK14** Center Feed

4. **TEK34** 90° "L" Connector
(adjustable universal polarity)

- 5a. **TEK39** "T" Connector
(adjustable right reverse polarity)

- 5b. **TEK40** "T" Connector
(adjustable Left Standard polarity)

6. **TEK38** "X" Connector



JUNO HD COMMERCIAL TRAC

120V, 2-Circuit/2-Neutral Track System

TRACK SECTIONS, JOINERS, FEEDS, ACCESSORIES & FIXTURES

TEK Series

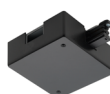
SYSTEM COMPONENTS



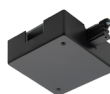
TEK11 BL, TEK11 WH
End Feed - Left Standard Polarity
Enables feeding of TEK Trac from top.
Use as Conduit End Feed also.



TEK12 BL, TEK12 WH
End Feed - Right Reverse Polarity
Enables feeding of TEK Trac from top.
Use as Conduit End Feed also.



TEK11CL BL, TEK11CL WH
Current Limiting End Feed - Left Standard Polarity
Enables feeding of TEK Trac from top. Requires two TCL Current Limiters (one per circuit) to provide track current limiting per national, state and local energy codes. Permanently attaches to track using one-way screw.



TEK12CL BL, TEK12CL WH
Current Limiting End Feed - Right Reverse Polarity
Enables feeding of TEK Trac from top. Requires two TCL Current Limiters (one per circuit) to provide track current limiting per national, state and local energy codes. Permanently attaches to track using one-way screw.



TCLCB 0.5A BLCK, TCLCB 0.5A WHT, TCLCB 1A BLCK, TCLCB 1A WHT, TCLCB 2A BLCK, TCLCB 2A WHT, TCLCB 3A BLCK, TCLCB 3A WHT, TCLCB 4A BLCK, TCLCB 4A WHT, TCLCB 5A BLCK, TCLCB 5A WHT, TCLCB 6A BLCK, TCLCB 6A WHT, TCLCB 7A BLCK, TCLCB 7A WHT, TCLCB 8A BLCK, TCLCB 8A WHT, TCLCB 10A BLCK, TCLCB 10A WHT, TCLCB 12A BLCK, TCLCB 12A WHT, TCLCB 14A BLCK, TCLCB 14A WHT,

Plug-In Current Limiters

For use with TEK11 or TEK12 Current Limiting End Feeds. Available in 0.5A (60W), 1A (120W), 2A (240W), 3A (360W), 4A (480W), 5A (600W), 6A (720W), 7A (840W), 8A (960W), 10A (1200W), 12A (1440W) and 14A (1680W) ratings.



TEK14 BL, TEK14 WH
Center Feed
Joins two TEK Trac sections in-line both electrically and mechanically. Enables feeding of TEK Trac from top at intersection.



TEK21 BL, TEK21 WH
Miniature Straight Connector
Joins two TEK Trac sections in-line both electrically and mechanically.



TEK24 BL, TEK24 WH
Adjustable Connector
Capable of joining two TEK Trac sections at 90° to 180°. Ideal for applications where using an "L" connector is not practical; also useful for installing Trac around curved architectural details.



TEK34 BL, TEK34 WH
90° "L" Connector
Joins TEK Trac sections to make a 90° angle with continued electrical feed. May be used to feed TEK Trac from top.



TEK38 BL, TEK38 WH
"X" Connector
Joins four TEK Trac sections to make an "X" intersection with continued electrical feed. May be used to feed TEK Trac from top.



TEK39 BL, TEK39 WH
"T" Connector - Adjustable Right Reverse Polarity
Joins three TEK Trac sections to make a "T" intersection with continued electrical feed. May be used to feed TEK Trac from top.



TEK40 BL, TEK40 WH
"T" Connector - Adjustable Left Standard Polarity
Joins three TEK Trac sections to make a "T" intersection with continued electrical feed. May be used to feed TEK Trac from top.



GES15 BL, GES15 WH
Outlet Box Cover
Thermoplastic outlet box cover for use when feeding TEK Trac directly over outlet box using TEK11, TEK12, TEK14, TEK34, TEK38, TEK39 or TEK40.



TEK41 BL, TEK41 WH
Dead End
Not supplied with TEK Trac sections — must be ordered separately.



XTSV12
Track Conductor Bending Tool
All-in-one hand tool bends the track conductors and measures the correct length to ensure proper electrical contact. Required only if track sections are cut in the field.



SKB10 BL, SKB10 WH
Mounting Bracket
For mounting direct to ceiling



SKBT12 BL, SKBT12 WH
Mounting Bracket
For mounting to flush tile 15/16" T-bar ceiling.



SKBX12 BL, SKBX12 WH
Mounting Bracket
For mounting to drop tile recessed 15/16" T-bar ceiling.



SKB30 BL, SKB30 WH
Ceiling Cup Kit
Use to suspend TEK Trac from the ceiling when using steel cable or threaded rod. Included bracket provides suspension attachment point and ceiling cup covers the bracket for an aesthetically pleasing result. **INCLUDES BRACKET AND CEILING CUP ONLY.** Must be combined with SP4P and SKB34 or 1/4"-20 threaded rod (supplied by others) for a complete suspension solution.



SKB34 5FT, SKB34 9FT
Cable Suspension Kit
Use to suspend TEK Trac from the ceiling with supplied 5' or 9' steel cable. **INCLUDES CABLE AND CABLE ADJUSTMENT FITTER ONLY.** Must be combined with SP4P and SKB30 for a complete suspension solution.



SPUS 12IN BL, SPUS 12IN WH, SPUS 18IN BL, SPUS 18IN WH, SPUS 24IN BL, SPUS 24IN WH, SPUS 48IN BL, SPUS 48IN WH
Mounting Stem Kit
Use to suspend TEK Trac from the ceiling. **INCLUDES MOUNTING STEM AND CANOPY COMPONENTS ONLY.** Must be combined with SP4P for suspension-only mounting points (SP4P not needed at feed or connection points). Available in 12", 18", 24" and 48" lengths.



SP4P BL, SP4P WH
Universal Suspension Coupler
Use to suspend TEK Trac, except at feed or connection points. **INCLUDES SUSPENSION COUPLER ONLY.** Must be combined with SPUS Stem Kit, or SKB34 Cable Kit, or 1/4"-20 threaded rod (supplied by others) for a complete suspension solution.

Finishes: BL, BLCK - Black, WH, WHT - White