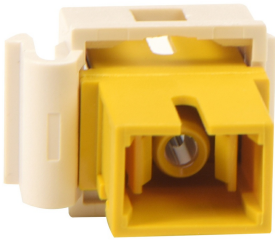


TechChoice Fiber Keystone Module, 1-SC fiber simplex



Features & Benefits

Rear Load: Easy Installation

Snap-in module: Simple, secure installation Modular design: Flexibility in structured cabling system design

No special tools required: Reduced installation expense

Fully compatible with all TechChoice faceplates: Provides wide range of design possibilities

Specifications

General Info

Product Line	Ortronics	Color	Fog White
UPC Number	662875022084	Country Of Origin	Mexico
Features	Rear Loading, Toolless Installation	Connector Color	Yellow
Housing Color	Fog White	Application Sector	Commercial, Industrial
Standard	UL Standard	Type	Jack

Dimensions

Product Width US	0.55 in	Product Depth US	1.03 in
Product Height US	0.63 in		

Additional Information

RoHS Compliant	Yes
----------------	-----

Technical Information

Compatibility	Keystone	Ferrule	Zirconia Ceramic
Number of Ports	1	Alignment Sleeve Material	Zirconia

Shuttered Adapters	No	Number of Fibers	1
Connector 2	SC Female	Connector 1	SC Female
Ferrule Diameter	2.5 mm		
