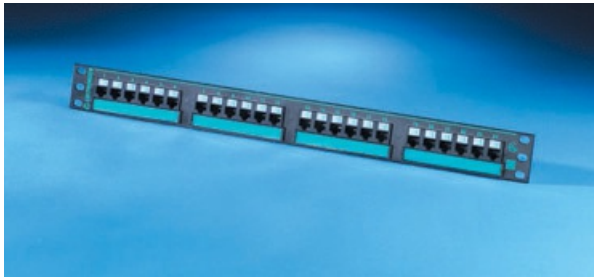




Ortronics  
Clarity 6 24-port Category 6 patch panel - six-port modules - 19 in x 1.75 in  
Part No. PHD66U24



Clarity 6 24-Port high density Category 6 patch panel is component compliant to EIA/TIA Category 6 performance requirements. It occupies one rack unit, and measures 19" x 1.75". Jacks are grouped in six-port modules. Part of the Clarity 6 link and channel solution that provides significant installed performance headroom.

## Features & Benefits

- ETL verified to TIA Category 6 component spec: Ensures component performance.
- Center tuned to Clarity 6 patch cords: More transparent mated union.
- Universally wired 110 termination: Supports T568A and T568B installs.
- New IDC housing: Handles larger Category 6 conductors.
- Supplied rear cable management: Supports good cabling practice.
- High density design: Maximizes rack utilization.
- RoHS compliant: Lead free.

## Specifications

### General Info

|              |              |                    |                        |
|--------------|--------------|--------------------|------------------------|
| Product Line | Ortronics    | Color              | Black                  |
| UPC Number   | 662875441267 | Country Of Origin  | Mexico                 |
| Material     | Steel        | Application Sector | Commercial, Industrial |
| Standard     | RoHS         | Warranty Type      | 5-Year                 |
| Type         | Panel        |                    |                        |

### Dimensions

|                   |         |                  |         |
|-------------------|---------|------------------|---------|
| Product Width US  | 19.0 in | Product Depth US | 4.47 in |
| Product Height US | 1.75 in |                  |         |

### Additional Information

|                |     |   |     |
|----------------|-----|---|-----|
| RoHS Compliant | Yes | Product Has Potential to Contribute to LEED | Yes |
|----------------|-----|---|-----|

---

Product Environmental Profile      Yes

---

### Technical Information

---

|               |     |            |     |
|---------------|-----|------------|-----|
| Compatibility | HDJ | Rack Units | 1 U |
|---------------|-----|------------|-----|

---

|            |           |                 |    |
|------------|-----------|-----------------|----|
| Wire Gauge | 22-24 AWG | Number of Ports | 24 |
|------------|-----------|-----------------|----|

---

|                           |          |                |       |
|---------------------------|----------|----------------|-------|
| Shielded/Unshielded Cable | Shielded | Connector Type | RJ-45 |
|---------------------------|----------|----------------|-------|

---

|         |       |         |        |
|---------|-------|---------|--------|
| Wattage | 100 W | Voltage | 60.0 V |
|---------|-------|---------|--------|

---